

FACILITY CAPACITY ASSESSMENT

FOR

NESHAMINY SCHOOL DISTRICT

2001 LINCOLN HIGHWAY
LANGHORNE, PA 19047



ARCHITECTURAL
GROUP

OCTOBER 16, 2013 – UPDATED DRAFT
DECEMBER 4, 2013 - ISSUED

Table of Contents

Executive summary.....2

Building Capacities and Calculation Methodology

Overview 4
Table A: Current classrooms in use by school 5

Projected Enrollment (District).....6
Table 1: Projected enrollment by school.....6

School Building Capacity Calculation Factors 7
Table2: Capacity calculation factors and assumptions.....8

Building Capacities – Current and Historic 10
Table3a and 3b: Current and historic capacity by school.....10
Table4: Current capacity vs. estimated 5-year projections of enrollment.....11

Potential Building Capacities.....12
Table5.1 through 5.11: Potential capacity by school.....13
Table 6.1: Potential capacity vs. estimated 5-year projections of enrollment 18
Table 6.2: Current and potential capacity supporting stations considered in capacity calculations.....18

Supporting Information

1: Allocation of Projected Enrollments; 10-year Trends.....Appendix 1

2: Building by Building Capacity Calculation Detail.....Appendix 2

3: Current Building Plans.....Appendix 3

Executive Summary

Assessments were undertaken of the current and past space use and capacity at each of Neshaminy School District’s elementary and middle schools. The goal of this assessment was to understand how each building is utilized, the programming and policy practices under which each building is currently scheduled and district enrollment trends for understanding comparative growth between various schools. With consideration of these factors, as well as information from meetings with each school principal and walk-through tours of each facility, an assessment of both: (a) current capacity and (b) potential capacity for each building was developed.

Projected enrollment

Projections of future enrollments utilized in this study were provided by the Neshaminy School District. Individual school projections were outside the scope of this assessment; however, enrollment trends for each of the district’s elementary and middle schools based on the past ten years of district provided information were reviewed to understand relative growth from school to school. This breakdown and the historic data can be found on page 6 and in Appendix 1.

	Current	5-year Projection	Variance +/-(-)
Elementary Schools	3,736	3,447	(289)
Middle Schools	2,066	2,192	126
	5,802	5,639	(163)

School Building Capacity

Building capacities are not absolute figures but instead represent the ability of each school building to support enrollment based on a series of factors and policies. Factors influencing the calculation of capacity (e.g.: class sizes, utilization rates, etc.) are identified on page 7 of this report.

Current School Building Capacities

Current and historic capacities for the elementary schools and current capacities for the middle schools are outlined on page 10 of this report. These capacities are calculated based on the factors outlined on page 7 as well as information provided by the district, meetings with the school

Building Capacity Assessment – Executive Summary

principals, and direct observation of current usage at each school. Current capacities of each school and comparative 5-year projected enrollment figures are shown below.

Elementary Schools	Current Capacity	Est. Proj. Enroll Distribution*	Est. Variance	% of Capacity
Pearl S. Buck	419	381	38	91%
Samuel Everitt	419	387	32	92%
Joseph E. Ferderbar	626	543	83	87%
Oliver Heckman	506	465	41	92%
Herbert Hoover	739	578	161	78%
Lower Southhampton	490	438	52	89%
Walter Miller	438	330	108	75%
Albert Schweitzer	425	325	99	77%
	4061	3447	614	85%

Middle Schools	Potential Capacity	Est. Enroll Distribution	Est. Variance	% of Capacity
Maple Point	1576	1180	396	75%
Poquessing	880	459	421	52%
Sandburg	894	553	341	62%
	3350	2192	1158	65%

Potential School Building Capacities

While current capacity represents a baseline capacity figure, changes could be considered in the way facilities are used to increase capacity, enhance program delivery, or both. Adjustments to building use that would result in increased capacity and which may be appropriate for the District to consider were identified (where applicable). These are shown in tables 5.1 through 5.11 starting on page 18) and summarized in table 6.1 (page 18) also included below.

Elementary Schools	Potential Capacity	Est. Proj. Enroll Distribution*	Est. Variance	% of Capacity
Pearl S. Buck	442	381	62	86%
Samuel Everitt	419	387	32	92%
Joseph E. Ferderbar	626	543	83	87%
Oliver Heckman	554	465	88	84%
Herbert Hoover	763	578	185	76%
Lower Southhampton	490	438	52	89%
Walter Miller	486	330	156	68%
Albert Schweitzer	473	325	147	69%
	4252	3447	805	81%

Middle Schools	Potential Capacity	Est. Enroll Distribution	Est. Variance	% of Capacity
Maple Point	1632	1180	452	72%
Poquessing	880	459	421	52%
Sandburg	950	553	397	58%
	3462	2192	1270	63%

Overview

Assessments were undertaken of the current and past space use and capacity at each of Neshaminy School District's elementary and middle schools. The goal of this assessment was to understand how each building is utilized, the programming and policy practices under which each building is currently scheduled and district enrollment trends for understanding comparative growth between various schools. With consideration of these factors, as well as information from meetings with each school principal and walk-through tours of each facility, an assessment of both: (a) current capacity and (b) potential capacity for each building was developed. This assessment and the findings are described in terms of the following:

- **Enrollment:** The current and prior years enrollments were considered and trends of either growth or reduction in enrollment at each elementary school were reviewed.
- **Projected Enrollment:** 5-year projections of enrollment were provided by the District (overall elementary and overall middle school projected enrollment). These District enrollments were allocated to individual schools on a proportional basis to provide comparison to capacity figures.
- **Current School Usage:** Current room assignments, scheduling and program needs were considered for each of the elementary and middle schools.
- **Utilization Rates:** School programming utilization rates (*possible students supportable in spaces vs. actually assigned students*) were developed based on current and past usage to assess how efficiently each school operates given its programmatic mix and enrollment characteristics. Standard educational planning practice typically applies a 90% utilization rate for elementary schools and is utilized in this assessment. Middle schools vary depending on schedule and in-school practices and vary as a result. The rates used in this assessment and the methodology for those rates are as described in Table 2 on page 8
- **Current and Potential School Capacity:** A capacity figure representing current (baseline) programs and practices at each school was established and compared to projected enrollments. Additionally, a “potential” capacity figure was also developed. Achieving this potential capacity may require changes to current programming and in

these cases; changes are outlined for the District’s consideration. If such changes are considered reasonable by the District, then this figure can be used as a planning figure.

Current School Classroom Usage

The current classrooms in use at each of the schools at the time of assessment are illustrated in table A below. This table reflects the total number of classrooms available and in use at each school regardless of whether they appropriately or by program support capacity. Capacity supporting classrooms are designated by school in detail in the tables shown for each facility in Appendix 2.

Table A

Elementary Schools	Clrms	Music	Art	Cmptr	SE	SCSE	Other**	IU	Total
Pearl S. Buck	17	1	1	1	4	0	1	5	30
Samuel Everitt	17	1	1	0	3	0	0	2	24
Joseph E. Ferderbar	25	0	1	0	2	0	0	0	28
Oliver Heckman	20	2	1	1	4	0	0	0	28
Herbert Hoover	29	2	1	0	3	2	0	3	40
Lower Southhampton	20	1	1	1	3	0	0	1	27
Walter Miller	17	2	1	1	5	0	0	3	29
Albert Schweitzer	15	2	1	1	3	5	1	2	30
	160	11	8	5	27	7	2	16	236
Middle Schools	General classrooms as well as computer art, music, tech, science, consumer science and gym stations				SE	SCSE	Other	IU	Total
Maple Point	61				0	0	11	8	80
Poquessing	35				0	0	1	3	39
Sandburg	35				0	1	10	0	46
	131				0	1	22	11	165

Projected Enrollments

Projections of future enrollments utilized in this study were provided by the Neshaminy School District. Individual school projections were outside the scope of this assessment; however, enrollment trends for each of the district’s elementary and middle schools based on the past ten years of district provided information were reviewed to understand relative growth from school to school. These trends were applied as a means of breaking down the District’s overall elementary and middle school level projections into approximate school by school allocations for the limited purpose of providing a comparison to calculated capacity figures for each school. Enrollment trends and the school by school allocation used for comparison are outlined below.

Table 1

Elementary Schools	Oct 1, 2013 Enroll	Est. Proj Enroll*	Est. % of Proj Enroll
Pearl S. Buck	394	381	11%
Samuel Everitt	397	387	11%
Joseph E. Ferderbar	586	543	16%
Oliver Heckman	467	465	14%
Herbert Hoover	656	578	17%
Lower Southhampton	475	438	13%
Walter Miller	413	330	10%
Albert Schweitzer	348	325	9%
	3736	3447	100%

Middle Schools	Oct 1, 2013 Enroll	Est. Proj Enroll*	Est. % of Proj Enroll
Maple Point	973	1,180	54%
Poquessing	566	459	21%
Sandburg	527	553	25%
	2066	2192	100%

**Elementary and Middle school total projected enrollments were provided by the District. School by school figures were estimated to provide comparative capacity figures across various schools.*

It is important to note that the illustrated trends shown in Appendix 1 of this report represent straight-line averaged trends based on the past 10 years of enrollment data which are extended forward. As such, they should not be construed as individual school projections but merely as a means of comparatively gauging relative growth patterns at one school verses another and to provide some context for capacity figures. As such, these 10-year trends were used to establish a proportion of the District’s overall projected enrollment that might appropriately be allocated to each school.

School Building Capacity

Building capacities are not absolute figures but instead represent the ability of each school building to support enrollment based on a series of factors and policies. These include:

- a. How the use of space in each building is assigned (*e.g.: is a full size classroom dedicated to general or specialized use such as art or music or are more specialized programs assigned to one particular building vs. another*);
- b. How effectively each space in the building is utilized (*e.g.: number of available periods a space is actually scheduled vs. the possible periods for which it could be scheduled and the needs of the specialized programs assigned to individual spaces*);
- c. District maximum class sizes in terms of students/room; and
- d. Sizes of spaces and their ability to support full or partial class sizes (*e.g.: partial sized classrooms are not considered capacity supporting, but are used for small group instruction*).

Buildings can be utilized at rates that are over or under capacity for many reasons relating to these criteria as well as other factors such as variations in enrollments from grade to grade and year to year, student in/out migration at individual schools throughout the year, or variations in assigned class sizes from grade to grade.

School Building Capacity – Calculation Factors

To assess the capacity of each school building, individual meetings were held with the principal's at each school and room assignments (from fall, 2013) were reviewed along with current class sizes and operational practices. Each building was toured to observe use and consider the various sizes and configurations of rooms in the buildings and evaluate the suitability of spaces to support full size classes, partial classes, or specialized programs. To provide as objective an assessment of capacity as possible the various factors utilized in the calculation of capacity are based on the following standards and/or district practices shown in table 2 which follows:

Table 2

Capacity Factor	Value	Basis or Source
Elementary Class Sizes (students/room)		
K (½ or full day)	22/44 FTE*	District maximum class size
Grade 1	24	District maximum class size
Grade 2	25	District maximum class size
Grade 3	26	District maximum class size
Grade 4	29	District maximum class size
Grade 5	29	District maximum class size
Average Grade 1–5	27	An average of maximum class sizes for grades 1 through 5 (see note 1)
Grade 1–5 Special Ed	12	District maximum class size
Middle School Class Sizes (students/room)		
General Ed Gr. 6-8	35	District maximum class size
Science/Lab Gr. 6-8	30	District maximum class size
Bus/Art/Tech Gr. 6-8	20	District maximum class size
Grade 6–8 Special Ed	12	District maximum class size
Middle School Schedule	7 period/6 day cycle	Rooms nominally considered available for between 5 and 6 periods/day out of a possible 7 (71-85%).
Utilization Rates		
Elementary School	Maximum of 90% or 4 year average by school	Actual utilization is calculated, however; the higher of a generally accepted elementary school utilization (90%) or the actual calculated utilization is used
Middle School	Maximum of 80% or school actual	80% figure based on rooms available to support capacity between 5-6 hours out of 7 available daily.

*FTE = Full Time Equivalent for ½ day programs

Rooms assigned to either general instructional use (*capacity supporting at all school levels*) or specialized instruction were determined based on a combination of the information provided by the individual school principals and/or the scheduling assignments for fall 2013. Rooms assigned to programming where students are “pulled-out” of other classes to attend are not considered capacity supporting. At the elementary level, capacity is accounted for under a student’s homeroom. Art, music, gym, or similar specialized spaces are not considered capacity supporting at the elementary level as students are pulled-out of their primary class to attend. When this occurs, a “seat” remains empty and to avoid double counting of potential capacity, specialized pull-out programs are not considered capacity supporting.

At the middle school level, general classrooms/homerooms as well as art, music, computer, gym, and similar spaces are considered capacity supporting if students are scheduled into them during the day rather than pulled-out of other spaces for specialized instruction.

NOTE 1: As general classrooms in an elementary school can be assigned to any grade in any particular year based on that year's specific enrollment needs, an average grade 1–5 class size figure is therefore used to calculate capacity as shown on the table on page 7. This accommodates enrollment dynamics which can change from year to year.

NOTE 2: The modification of any of the above factors or policies *will impact* educational capacities. Changing a middle school schedule, applying a larger class size to an elementary school space, or adding/dropping specific program requirements are all examples that would alter the capacity for a building as capacity figures represent the ability of each school building to support enrollment based on these factors and policies.

Current School Capacities

The current – or baseline – capacity was calculated for each elementary and middle school building and the historic capacity for each elementary school was calculated based on the programs supported at each school over the last four years. These are shown in the tables below (*see Appendix 1: Current and Historic Capacities*). *NOTE: Enrollment figures are as reported by individual schools at our meetings and are from varying time frames. They may not match District record enrollments or figures used by the district to generate enrollment projections.

Table 3a: Elementary Schools – Current and Historic Capacity and Enrollments

Elementary	2010		2011		2012		2013	
	Enroll	+ / (-)	Enroll	+ / (-)	Enroll	+ / (-)	Enroll	+ / (-)
Pearl S. Buck	461		425		407		394	
Capacity	530	13.0%	530	19.8%	482	15.6%	419	5.9%
over/(under)	69		105		75		25	
Samuel Everitt	420		398		367		397	
Capacity	438	4.2%	438	9.2%	419	12.3%	419	5.1%
over/(under)	18		40		52		22	
Joseph E. Ferderbar	578		570		591		586	
Capacity	578	0.0%	558	-2.2%	582	-1.6%	626	6.3%
over/(under)	0		-12		-9		40	
Oliver Heckman	461		511		487		467	
Capacity	534	13.7%	534	4.3%	510	4.5%	506	7.7%
over/(under)	73		23		23		39	
Herbert Hoover	625		645		620		656	
Capacity	626	0.1%	650	0.7%	685	9.5%	739	11.2%
over/(under)	1		5		65		83	
Lower Southampton	462		487		511		475	
Capacity	482	4.2%	506	3.8%	554	7.7%	490	3.1%
over/(under)	20		19		43		15	
Walter Miller	389		373		419		413	
Capacity	438	11.2%	438	14.9%	458	8.5%	438	5.8%
over/(under)	49		65		39		25	
Albert Schweitzer	382		342		375		348	
Capacity	420	9.1%	460	25.6%	492	23.8%	425	18.0%
over/(under)	38		118		117		77	
Enrollment	3778		3751		3777		3736	
Capacity	4046	6.6%	4114	8.8%	4182	9.7%	4061	8.0%
Difference	268		363		405		325	

Understanding tables 3a & 3b:

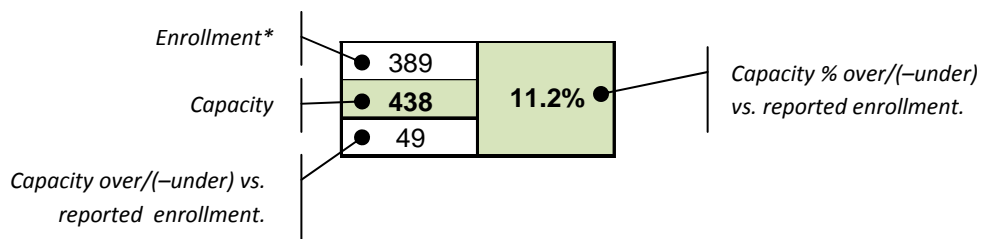


Table 3b: Middle Schools – Current Capacity and Enrollments

Middle Schools		2013	
		+ / (-)	
Poquessing	Enroll	566	35.7%
	Capacity	880	
	over/(under)	314	
Sandburg	Enroll	527	41.0%
	Capacity	894	
	over/(under)	367	
Maple Point	Enroll	973	38.3%
	Capacity	1576	
	over/(under)	603	
Enrollment		2066	38.3%
Capacity		3350	
Difference		1284	

**Based upon District provided enrollment projections.*

Table 4: Current Capacities vs. Est. 5-year Enrollment Projections

The below figures represent the capacity of each school given current programs and operating policies and can be considered a “baseline” capacity figure.

Elementary Schools	Current Capacity	Est. Proj. Enroll Distribution*	Est. Variance	% of Capacity
Pearl S. Buck	419	381	38	91%
Samuel Everitt	419	387	32	92%
Joseph E. Ferderbar	626	543	83	87%
Oliver Heckman	506	465	41	92%
Herbert Hoover	739	578	161	78%
Lower Southhampton	490	438	52	89%
Walter Miller	438	330	108	75%
Albert Schweitzer	425	325	99	77%
	4061	3447	614	85%
Middle Schools	Potential Capacity	Est. Enroll Distribution	Est. Variance	% of Capacity
Maple Point	1576	1180	396	75%
Poquessing	880	459	421	52%
Sandburg	894	553	341	62%
	3350	2192	1158	65%

Potential School Capacity

While current capacity represents a baseline capacity figure, changes could be considered in the way facilities are used to increase capacity, enhance program delivery, or both. Adjustments to building use that would result in increased capacity and which may be appropriate for the District to consider were identified (where applicable). Changes considered are shown below for each school in tables 5.1 through 5.11 (*and summarized on page 18*) along with the potential adjustment to capacity that could result if adopted. It should be noted that these are merely suggestions from a facility usage perspective and there may be very good educational reasons for current assignments that this perspective may not fully consider.

Additionally, further considerations could be made that were not included in the potential capacity figures but which may be appropriate for consideration. These include:

- **Elementary Computer Labs:** Dedicated computer labs have are scheduled on a limited basis, typically utilized through teacher sign-up. Additionally, these labs are used for MAP testing 3 times during the year when demand is high. Currently five elementary schools have dedicated computer labs and three do not. Options which may be appropriate to consider outside of the status quo and which would impact capacity may be: (1) adding dedicated computer rooms in schools without them by taking up an existing space which would reduce capacity at three schools; or (2) eliminating the existing computer labs in favor of computers carts (COW's) which would add capacity at five schools.
- **Resource Rooms:** The majority of special education instruction is based on inclusion or structured pull-out instruction. Rooms dedicated to pull-out instruction are not counted as capacity supporting however; in some cases, these rooms are full size classrooms. Three such rooms at the elementary level and two at the middle school level could be considered for conversion to capacity supporting use if current pull-out programs can be accommodated otherwise or a room be divided into two spaces as noted. By contrast, some schools have self-contained special education (SCSE) programs. SCSE rooms *are* counted as capacity supporting as students reside in these rooms as homerooms.

- **Intermediate Unit (IU) dedicated rooms:** Most schools host the IU in various rooms serving a mix of Neshaminy and other district students. These rooms could, if returned to district use, serve to support capacity. A total of 21 elementary and 8 middle school rooms are dedicated to IU use (see Appendix 2).
- **Full-day Kindergarten:** Currently, the District’s kindergarten program consists of both half-day and full-day classes. Should the district consider implementation of full-day kindergarten at all schools additional space would be required to facilitate the program. Currently 11 classrooms are allocated to half-day kindergarten and 9 to full-day at the various elementary schools. If a full-day program was implemented with class sizes close to the target class size of 22 students/room, an estimated 9-10 additional rooms may be required depending on enrollment distribution between schools. If these rooms were reallocated from existing rooms, this would reduce overall elementary capacity by approximately 220 seats. Additionally, a full-day program would likely result in additional enrollment which has not been assessed as part of this effort but which could impact this estimate substantially depending on the increased draw from a full-day kindergarten program in the district.

Outside of consideration of the above, each school with identified potential changes is shown in the tables which follow. Figures in shaded boxes represent capacity supporting spaces:

Pearl S. Buck Elementary School (Table 5.1)

Potential Capacity									Current Capacity >>		419
	Clrms	Music	Art	Cmptr	SE*	SCSE	Other**	IU			
1/2 day K	1								1	44	44
Full-day K	1								1	22	22
Grades 1-5	15				1				16 / 0	27	426
SCSE (1-5)									0 / 0	12	0
Non-Capacity		1	1	1	3		1	5	12	0	
									Subtotal >>		492
									Utilization Rate (Greater of school average or 90%) >>		90.0%
Description of Changes:									Total >>		442
1. Subdivide Music room into (2) SE instruction; move music to reg classroom; maintain separate lesson room 2. Current Art room, book room and IU rooms could also be considered											

Capacity supporting spaces are shaded >>



Samuel Everitt Elementary School (Table 5.2)

Potential Capacity									Current Capacity >>		419
	Clrms	Music	Art	Cmptr	SE*	SCSE	Other**	IU			
1/2 day K	1								1	44	44
Full-day K	1								1	22	22
Grades 1-5	15								15 / 0	27	399
SCSE (1-5)									0 / 0	12	0
Non-Capacity		1	1		3			2	7	0	

*SE: pull-out use in full size rooms Subtotal >> 465
 **Other: full size spaces which could support capacity Utilization Rate (Greater of school average or 90%) >> 90.0%

Description of Changes:
 1. None

Total >> 419

Joseph Ferderbar Elementary School (Table 5.3)

Potential Capacity									Current Capacity >>		626
	Clrms	Music	Art	Cmptr	SE*	SCSE	Other**	IU			
1/2 day K	2								2	44	88
Full-day K	1								1	22	22
Grades 1-5	22								22 / 0	27	585
SCSE (1-5)									0 / 0	12	0
Non-Capacity			1		2				3	0	

*SE: pull-out use in full size rooms Subtotal >> 695
 **Other: full size spaces which could support capacity Utilization Rate (Greater of school average or 90%) >> 90.0%

Description of Changes:
 1. None

Total >> 626

Oliver Heckman Elementary School (Table 5.4)

Potential Capacity									Current Capacity >>		506
	Clrms	Music	Art	Cmptr	SE*	SCSE	Other**	IU			
1/2 day K	2								2	44	88
Full-day K	1								1	22	22
Grades 1-5	17	1			1				19 / 0	27	505
SCSE (1-5)									0 / 0	12	0
Non-Capacity		1	1	1	3				6	0	

*SE: pull-out use in full size rooms Subtotal >> 615
 **Other: full size spaces which could support capacity Utilization Rate (Greater of school average or 90%) >> 90.0%

Description of Changes:
 1. Allocate one of the current Music rooms to general instruction; compensate with lesson room elsewhere
 2. Re-assign one full-size SE pull-out room to capacity use; subdivide a full size room to compensate

Total >> 554

Herbert Hoover Elementary School (Table 5.5)

Potential Capacity									Current Capacity >>		
	Clrms	Music	Art	Cmptr	SE*	SCSE	Other**	IU			
1/2 day K	2								2	44	88
Full-day K	2								2	22	44
Grades 1-5	25	1							26 / 0	27	692
SCSE (1-5)					3	2			2 / 3	12	24
Non-Capacity		1	1					3	5	0	

*SE: pull-out use in full size rooms **Subtotal >>** 848

**Other: full size spaces which could support capacity Utilization Rate (Greater of school average or 90%) >> 90.0%

Description of Changes:

1. Allocate one of the current Music rooms to general instruction; compensate with lesson room elsewhere

Total >> **763**

Lower Southampton Elementary School (Table 5.6)

Potential Capacity									Current Capacity >>		
	Clrms	Music	Art	Cmptr	SE*	SCSE	Other**	IU			
1/2 day K	1								1	44	44
Full-day K	1								1	22	22
Grades 1-5	18								18 / 0	27	479
SCSE (1-5)									0 / 0	12	0
Non-Capacity		1	1	1	3			1	7	0	

*SE: pull-out use in full size rooms **Subtotal >>** 545

**Other: full size spaces which could support capacity Utilization Rate (Greater of school average or 90%) >> 90.0%

Description of Changes:

1. None

Total >> **490**

Walter Miller Elementary School (Table 5.7)

	Clrms	Music	Art	Cmptr	SE*	SCSE	Other**	IU			
1/2 day K	1								1	44	44
Full-day K	1								1	22	22
Grades 1-5	15	1			1				17 / 0	27	452
SCSE (1-5)									0 / 0	12	0
Non-Capacity		1	1	1	4			3	10	0	

*SE: pull-out use in full size rooms **Subtotal >>** 518

**Other: full size spaces which could support capacity Utilization Rate (Greater of school average or 90%) >> 90.0%

Description of Changes:

1. Allocate one of the current Music rooms to general instruction; compensate with lesson room elsewhere
 2. Re-assign one full-size SE pull-out room to capacity use; subdivide one full size room to compensate

Total >> **466**

Albert Schweitzer Elementary School (Table 5.8)

Potential Capacity									Current Capacity >>		
	Clrms	Music	Art	Cmptr	SE*	SCSE	Other**	IU			
1/2 day K	1								1	44	44
Full-day K	1								1	22	22
Grades 1-5	13	1					1		15 / 0	27	399
SCSE (1-5)						5			5 / 0	12	60
Non-Capacity		1	1	1	3			2	8	0	
									Subtotal >>		525
**Other: full size spaces which could support capacity									Utilization Rate (Greater of school average or 90%) >>		90.0%
Description of Changes:									Total >>		473
1. Use current professional development room as capacity supporting											
2. Use (1) Lounge area as Music classroom; reallocate Music room											

Maple Point Middle School (Table 5.9)

Current Capacity															
	Clrms	Music	Art	Cmptr	Tech	Sci	PE	ConSci	SE*	SCSE	Other**	IU			
Grades 6-8 (gen stations)	37			4			3	2					46	35	1610
Grades 6-8 (Sci/Lab)						6							6	30	180
Grades 6-8 (Bus/Art/Tech)		3	3		3								9	20	180
SCSE (6-8)													0	12	0
Non-Capacity											11	8	19	0	
											Subtotal >>		1970		
**Other: full size or LGI rooms or spaces which could provide full size rooms											Utilization Rate (Greater of school average or 90%) >>		80.0%		
Capacity supporting spaces are shaded >>											Total >>		1576		
Potential Capacity															
	Clrms	Music	Art	Cmptr	Tech	Sci	PE	ConSci	SE*	SCSE	Other**	IU			
Grades 6-8 (gen stations)	37			4			3	2			2		48	35	1680
Grades 6-8 (Sci/Lab)						6							6	30	180
Grades 6-8 (Bus/Art/Tech)		3	3		3								9	20	180
SCSE (6-8)													0	12	0
Non-Capacity											9	8	17	0	
											Subtotal >>		2040		
**Other: full size or LGI rooms or spaces which could provide full size rooms											Utilization Rate (Greater of school average or 80%) >>		80.0%		
Description of Changes:											Total >>		1632		
1. Combine resource use of regular rooms into fully scheduled rooms; current rooms 1/2 scheduled															

Poquessing Middle School (Table 5.10)

Current Capacity

	Clrms	Music	Art	Cmptr	Tech	Sci	PE	ConSci	SE*	SCSE	Other**	IU			
Grades 6-8 (gen stations)	17			2			3	2					24	35	840
Grades 6-8 (Sci/Lab)						4							4	30	120
Grades 6-8 (Bus/Art/Tech)		2	2		3								7	20	140
SCSE (6-8)													0	12	0
Non-Capacity											1	3	4	0	

*SE: pull-out use in full size rooms

Subtotal >> 1100

**Other: full size or LGI rooms or spaces which could provide full size rooms

Utilization Rate (Greater of school average or 90%) >> 80.0%

Capacity supporting spaces are shaded >>



Total >> 880

Potential Capacity

	Clrms	Music	Art	Cmptr	Tech	Sci	PE	ConSci	SE*	SCSE	Other**	IU			
Grades 6-8 (gen stations)	17			2			3	2					24	35	840
Grades 6-8 (Sci/Lab)						4							4	30	120
Grades 6-8 (Bus/Art/Tech)		2	2		3								7	20	140
SCSE (6-8)													0	12	0
Non-Capacity											1	3	4	0	

*SE: pull-out use in full size rooms

Subtotal >> 1100

**Other: full size or LGI rooms or spaces which could provide full size rooms

Utilization Rate (Greater of school average or 90%) >> 80.0%

Description of Changes:

1. none

Total >> 880

Sandburg Middle School (Table 5.11)

Current Capacity

	Clrms	Music	Art	Cmptr	Tech	Sci	PE	ConSci	SE*	SCSE	Other**	IU			
Grades 6-8 (gen stations)	18			2			3	2					25	35	875
Grades 6-8 (Sci/Lab)						3							3	30	90
Grades 6-8 (Bus/Art/Tech)		2	2		3								7	20	140
SCSE (6-8)										1			1	12	12
Non-Capacity											10		10	0	

*SE: pull-out use in full size rooms

Subtotal >> 1117

**Other: full size or LGI rooms or spaces which could provide full size rooms

Utilization Rate (Greater of school average or 90%) >> 80.0%

Capacity supporting spaces are shaded >>



Total >> 894

Potential Capacity

	Clrms	Music	Art	Cmptr	Tech	Sci	PE	ConSci	SE*	SCSE	Other**	IU			
Grades 6-8 (gen stations)	18			2			3	2			2		27	35	945
Grades 6-8 (Sci/Lab)						3							3	30	90
Grades 6-8 (Bus/Art/Tech)		2	2		3								7	20	140
SCSE (6-8)										1			1	12	12
Non-Capacity											8		8	0	

*SE: pull-out use in full size rooms

Subtotal >> 1187

**Other: full size or LGI rooms or spaces which could provide full size rooms

Utilization Rate (Greater of school average or 80%) >> 80.0%

Description of Changes:

1. Combine resource use of regular rooms into fully scheduled rooms; current rooms 1/2 scheduled

Total >> 950

Table 6.1: Potential Capacities Compared to Est. 5-year Enrollment Projections

The below table summarizes the capacity that would be available at the various schools if the potential changes to space use were considered as identified in the tables starting on page 12.

Table 6.1

Elementary Schools	Potential Capacity	Est. Proj. Enroll Distribution*	Est. Variance	% of Capacity
Pearl S. Buck	442	381	62	86%
Samuel Everitt	419	387	32	92%
Joseph E. Ferderbar	626	543	83	87%
Oliver Heckman	554	465	88	84%
Herbert Hoover	763	578	185	76%
Lower Southhampton	490	438	52	89%
Walter Miller	486	330	156	68%
Albert Schweitzer	473	325	147	69%
	4252	3447	805	81%

Middle Schools	Potential Capacity	Est. Enroll Distribution	Est. Variance	% of Capacity
Maple Point	1632	1180	452	72%
Poquessing	880	459	421	52%
Sandburg	950	553	397	58%
	3462	2192	1270	63%

Current and potential capacities are calculated based upon the following capacity supporting stations (e.g.: classrooms) in each school:

Table 6.2

Elementary Schools	Current Capacity Stations	Potential Capacity Stations	+/-
Pearl S. Buck	17	18	1
Samuel Everitt	17	17	0
Joseph E. Ferderbar	25	25	0
Oliver Heckman	20	22	2
Herbert Hoover	29	32	3
Lower Southhampton	20	20	0
Walter Miller	17	19	2
Albert Schweitzer	15	22	7
	160	175	15

Middle Schools	Current Capacity Stations	Potential Capacity Stations	+/-
Maple Point	61	63	2
Poquessing	35	35	0
Sandburg	36	38	2
	292	311	19

Appendix 1

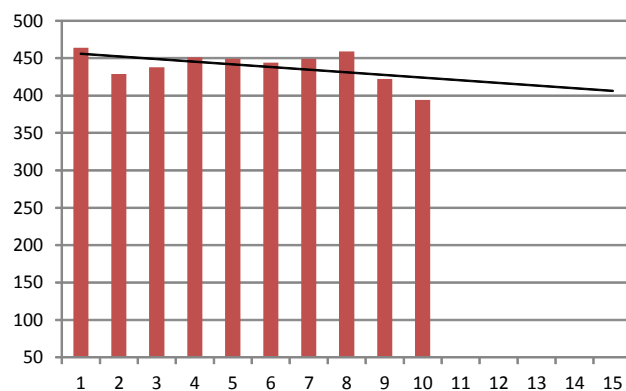
*Overall projected enrollments provided by the school district and school by school illustration
of growth/reduction straight-line trends based on historic enrollments figures*

Appendix 2: Current and Historic Enrollment

Individual school trends based on the past 10 years of enrollment data provided by the District are illustrated below. These trends were applied proportionally to the overall district-wide projection figure provided by the district to arrive at the school by school allocations of the overall number of elementary and middle school students provided by the District. NOTE: these are not, nor are intended to be, independent projections, but only illustrations of historic trends.

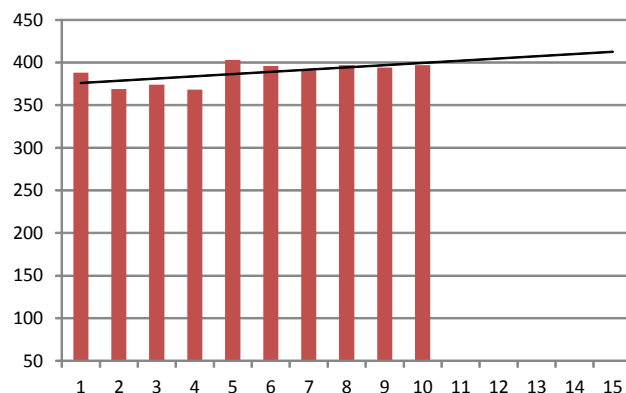
Pearl S. Buck

	Yr	Enroll	Trend
2004	1	464	
2005	2	429	
2006	3	438	
2007	4	451	
2008	5	449	
2009	6	444	$y = -3.5455x + 459.4$
2010	7	449	
2011	8	459	
2012	9	422	
2013	10	394	
2014	11		420
2015	12		417
2016	13		413
2017	14		410
2018	15		406



Samuel Everitt

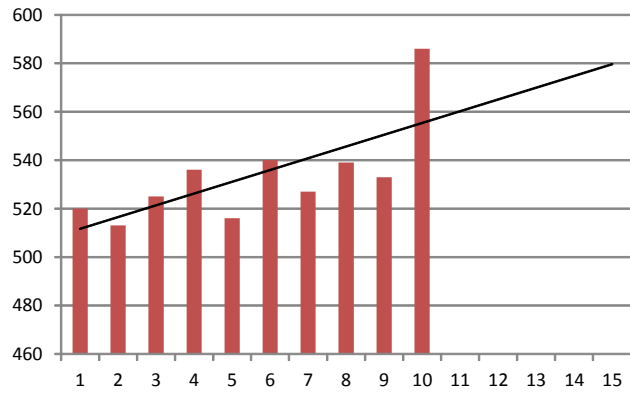
	Yr	Enroll	Trend
2004	1	388	
2005	2	369	
2006	3	374	
2007	4	368	
2008	5	403	
2009	6	396	$y = 2.6242x + 373.27$
2010	7	391	
2011	8	397	
2012	9	394	
2013	10	397	
2014	11		402
2015	12		405
2016	13		407
2017	14		410
2018	15		413



Joseph E. Ferderbar

	Yr	Enroll	Trend
2004	1	520	
2005	2	513	
2006	3	525	
2007	4	536	
2008	5	516	
2009	6	540	
2010	7	527	
2011	8	539	
2012	9	533	
2013	10	586	
2014	11		560
2015	12		565
2016	13		570
2017	14		575
2018	15		580

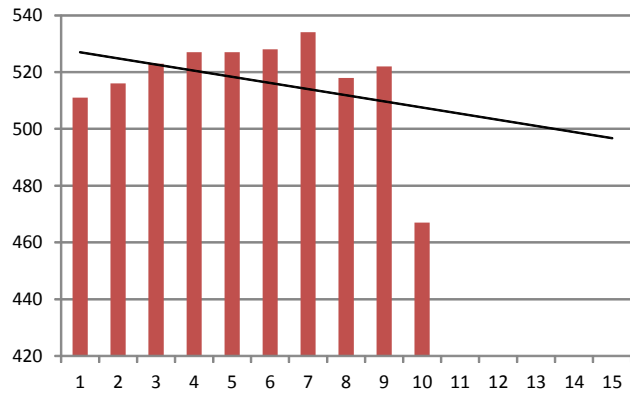
$$y=4.8545x+506.8$$



Oliver Heckman

	Yr	Enroll	Trend
2004	1	511	
2005	2	516	
2006	3	523	
2007	4	527	
2008	5	527	
2009	6	528	
2010	7	534	
2011	8	518	
2012	9	522	
2013	10	467	
2014	11		505
2015	12		503
2016	13		501
2017	14		499
2018	15		497

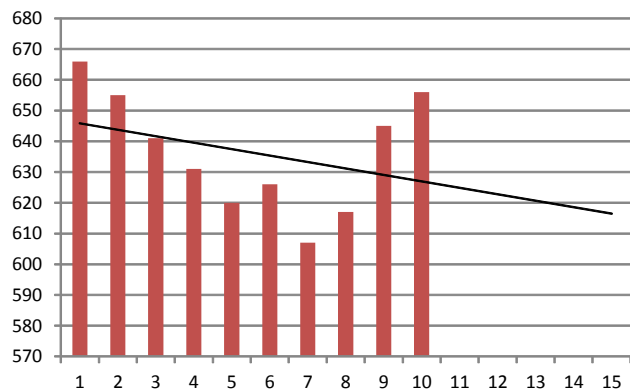
$$y=-2.1636x+529.2$$



Herbert Hoover

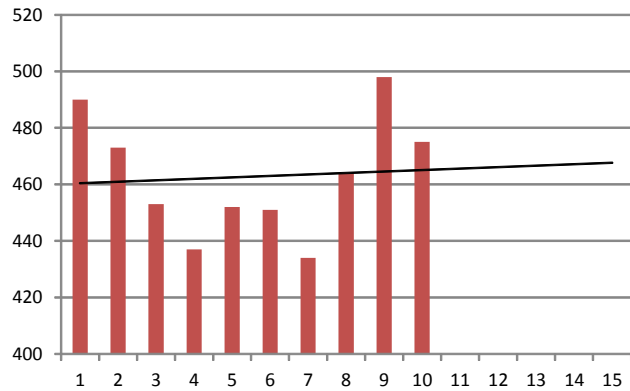
	Yr	Enroll	Trend
2004	1	666	
2005	2	655	
2006	3	641	
2007	4	631	
2008	5	620	
2009	6	626	
2010	7	607	
2011	8	617	
2012	9	645	
2013	10	656	
2014	11		625
2015	12		623
2016	13		621
2017	14		619
2018	15		616

$$y=-2.097x+647.93$$



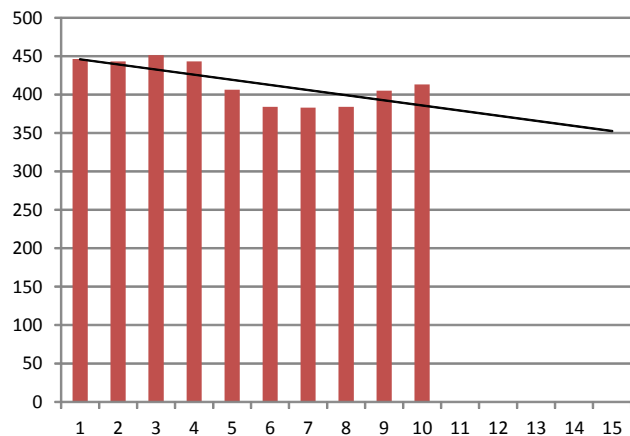
Lower Southampton

	Yr	Enroll	Trend
2004	1	490	
2005	2	473	
2006	3	453	
2007	4	437	
2008	5	452	
2009	6	451	$y=0.5152x+459.87$
2010	7	434	
2011	8	464	
2012	9	498	
2013	10	475	
2014	11		466
2015	12		466
2016	13		467
2017	14		467
2018	15		468



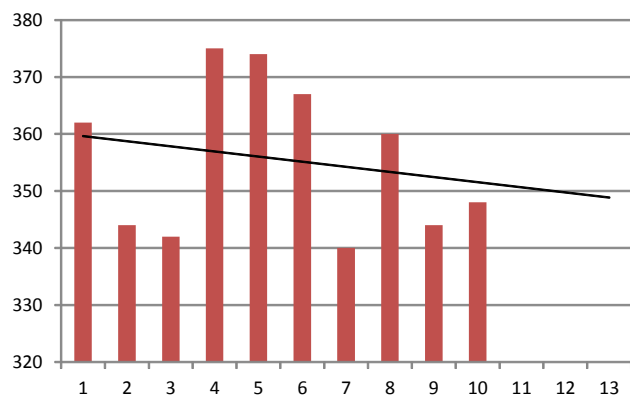
Walter Miller

	Yr	Enroll	Trend
2004	1	446	
2005	2	443	
2006	3	451	
2007	4	443	
2008	5	406	
2009	6	384	$y=-6.6667x+452.47$
2010	7	383	
2011	8	384	
2012	9	405	
2013	10	413	
2014	11		379
2015	12		372
2016	13		366
2017	14		359
2018	15		352



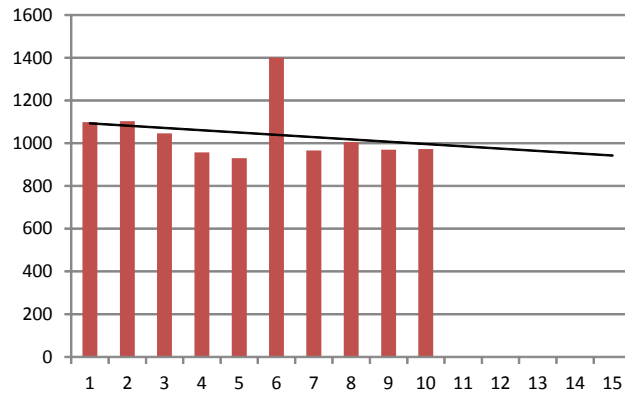
Albert Schweitzer

	Yr	Enroll	Trend
2004	1	362	
2005	2	344	
2006	3	342	
2007	4	375	
2008	5	374	
2009	6	367	$y=-0.897x+360.53$
2010	7	340	
2011	8	360	
2012	9	344	
2013	10	348	
2014	11		351
2015	12		350
2016	13		349
2017	14		348
2018	15		347



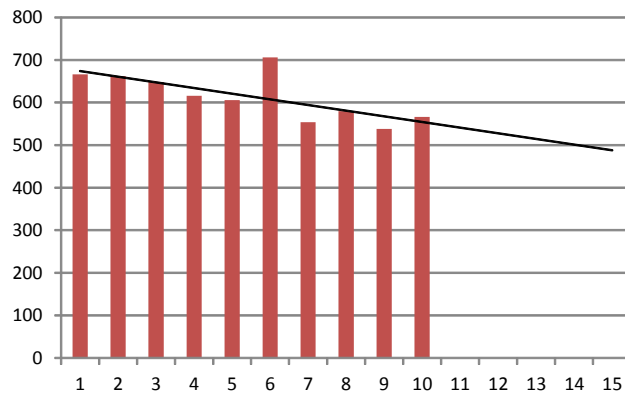
Maple Point MS

	Yr	Enroll	Trend
2004	1	1099	
2005	2	1103	
2006	3	1046	
2007	4	957	
2008	5	930	
2009	6	1401	$y=-10.782x+1104.2$
2010	7	966	
2011	8	1005	
2012	9	969	
2013	10	973	
2014	11		986
2015	12		975
2016	13		964
2017	14		953
2018	15		942



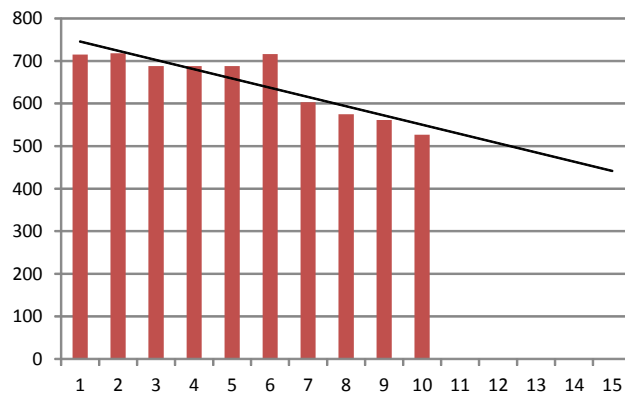
Poquessing MS

	Yr	Enroll	Trend
2004	1	666	
2005	2	662	
2006	3	648	
2007	4	616	
2008	5	606	
2009	6	706	$y=-13.297x+566$
2010	7	554	
2011	8	580	
2012	9	538	
2013	10	566	
2014	11		420
2015	12		406
2016	13		393
2017	14		380
2018	15		367



Sandburg MS

	Yr	Enroll	Trend
2004	1	715	
2005	2	718	
2006	3	688	
2007	4	688	
2008	5	688	
2009	6	716	$y=-21.715x+767.33$
2010	7	603	
2011	8	575	
2012	9	561	
2013	10	527	
2014	11		528
2015	12		507
2016	13		485
2017	14		463
2018	15		442



Appendix 2

*Capacity calculation detail and underlying space usage
information for elementary and middle schools*

Appendix 2: Current and Historic Capacities

The calculation basis for current and historic building capacities for each elementary school and current capacity for each middle school are shown in the tables on the accompanying pages, each illustrating the following:

Elementary Schools

- Historic enrollments for the last 4 years at the school
- Current capacity based on current building usage
- Potential building capacity
- Class sizes used in calculation
- Basis for capacity calculations for 2010 thru 2013 years. These tables list each space and how that space is currently assigned. Dark-yellow colored spaces are currently designated for special education, SCSE, or IU use.

Middle Schools

- Current year enrollments
- Current capacity based on current building usage
- Potential building capacity
- Class sizes used in calculation
- Basis for capacity calculations for 2010 thru 2013 years. These tables list each space and how that space is currently assigned. Dark-yellow colored spaces are currently designated for special education, SCSE, or IU use.

Pearl S Buck ES

Historic Students Assigned to Classrooms by Year/Grade

Grade Year	1/2 K	K	1	2	3	4	5	SCSE*	SubTotals		School Total
									General	SCSE	
2010-11	62	10	81	82	62	80	84	0	461	0	461
2011-12	48	12	70	72	64	80	79	0	425	0	425
2012-13	45	16	64	72	70	61	79	0	407	0	407
2013-14	33	22	72	64	72	69	62	0	394	0	394
4-Year Average	47	15	72	73	67	73	76	0	422	0	422
October 2013 Enroll	34	22	70	65	71	70	62				394

**Base	
Capacity	Utilization
461	78.3%
425	72.2%
407	76.0%
394	84.7%
422	77.8%
28	

Current Capacity

	Clrms	Music	Art	Cmptr	SE*	SCSE	Other**	IU	Stations	Stu/Sta	Capacity
1/2 day K	1								1	44	44
Full-day K	1								1	22	22
Grades 1-5	15								15	27	399
SCSE (1-5)									0 / 0	12	0
Non-Capacity		1	1	1	4		1	5	13	0	

*SE: pull-out use in full size rooms

Subtotal >> 465

**Other: full size spaces which could support capacity Utilization Rate (Greater of school average or 90%) >> 90.0%

Capacity supporting spaces are shaded >>



Total >> **419**

Potential Capacity

	Clrms	Music	Art	Cmptr	SE*	SCSE	Other**	IU	Stations	Stu/Sta	Capacity
1/2 day K	1								1	44	44
Full-day K	1								1	22	22
Grades 1-5	15				1				16 / 0	27	426
SCSE (1-5)									0 / 0	12	0
Non-Capacity		1	1	1	3		1	5	12	0	

*SE: pull-out use in full size rooms

Subtotal >> 492

**Other: full size spaces which could support capacity Utilization Rate (Greater of school average or 90%) >> 90.0%

Total >> **442**

Description of Changes:

1. Subdivide Music room into (2) SE instruction; move music to reg classroom; maintain seperate lesson room
2. Current Art room, book room and IU rooms could also be considered

Max Class Size	1/2 K	K	1	2	3	4	5	SCSE*
Gen/MS Core	44	22	24	25	26	29	29	12
MS Sci/Labs								
MS Bus/Art/Tech								
Used in Capacity Calc	44	22			27			12

*Only self-contained special education, not pull-out SE programming, is considered capacity supporting

**Base Capacity: calculated based upon current grade/use assignment at the school

***Possible Capacity: calculated with greater of average utilization

2013-14 Pearl S Buck ES Room Utilization												
Utilization Room	1/2 K	K	1	2	3	4	5	SCSE*	SubTotals		Current Use and Notes	
									General	SCSE*		
A1								0			Rdg/Speech - split	
A2								6			IU	
A3	33								33	0		
A4		22							22	0		
A5				22					22	0		
A6								0			split	
A7			24						24	0		
A8			24						24	0		
A9			24						24	0		
Art									0	0		
B1					23				23	0		
B2						23			23	0		
B3						23			23	0		
B4							21		21	0		
B5							20		20	0		
B6							21		21	0		
B7						23			23	0		
B8					25				25	0		
B9					24				24	0		
C1								5			IU	
C2								9			IU	
C3								6			IU	
C4				22					22	0		
C5								0			SE pull out	
C6 - computer									0	0		
C7								5			IU-split	
C8				20					20	0		
C9								0			AE - pull out	
Gym									0	0		
Music									0	0		
									0	0		
									0	0		
									0	0		
SubTotal	33	22	72	64	72	69	62	0	394	0		
Classes	1	1	3	3	3	3	3	0	17	0		
Avg Size	33.0	22.0	24.0	21.3	24.0	23.0	20.7		23.2		Calc at 90% Util	
Current Capacity	44	22	80	80	80	80	80	0	465	419		
Actual Enroll									394		Enrolled	
Actual % of Max	(current average building utilization)								84.7%			Avg Utilization Rate
Utiliz by Grade	0.75	1.00	1.00	0.85	0.92	0.79	0.71					

*Rooms assigned to "pull-out" special education are not considered capacity supporting

2012-13 Pearl S Buck ES Room Utilization												
Utilization Room	1/2 K	K	1	2	3	4	5	SCSE*	SubTotals		Notes	
									General	SCSE*		
A1								0			Reading/speech	
A2	15								15	0		
A3	30								30	0		
A4		16							16	0		
A5								10			IU	
A6								0			split	
A7			22						22	0		
A8			20						20	0		
A9			22						22	0		
Art									0	0	Art	
B1					23				23	0		
B2						21			21	0		
B3						19			19	0		
B4							26		26	0		
B5							26		26	0		
B6							27		27	0		
B7						21			21	0		
B8					23				23	0		
B9					24				24	0		
C1								8			IU	
C2								10			IU	
C3											shared with AE	
C4				18					18	0		
C5				17					17	0		
C6 - computer									0	0		
C7								7			IU	
C8				19					19	0		
C9				18					18	0		
Gym									0	0	Gym	
Music									0	0	Music	
									0	0		
									0	0		
SubTotal	45	16	64	72	70	61	79	0	407	0		
Classes	2	1	3	4	3	3	3	0	19	0		
Avg Size	22.5	16.0	21.3	18.0	23.3	20.3	26.3		21.4		Calc at 90% Util	
Current Capacity	88	22	80	106	80	80	80	0	536	482		
Actual Enroll									407		Enrolled	
Actual % of Max	(current average building utilization)								76.0%			Avg Utilization Rate
Utiliz by Grade	0.51	0.73	0.89	0.72	0.90	0.70	0.91					

*Rooms assigned to "pull-out" special education are not considered capacity supporting

2011-12 Pearl S Buck ES Room Utilization											
Utilization Room	1/2 K	K	1	2	3	4	5	SCSE*	SubTotals		Notes
									General	SCSE*	
A1								0			Reading/speech
A2	13								13	0	
A3	35								35	0	
A4		12							12	0	
A5			17						17	0	
A6								0			split
A7			17						17	0	
A8			18						18	0	
A9			18						18	0	
Art									0	0	Art
B1							20		20	0	
B2							19		19	0	
B3							21		21	0	
B4								27	27	0	
B5								25	25	0	
B6								27	27	0	
B7							20		20	0	
B8					21				21	0	
B9					22				22	0	
C1								7			IU
C2								11			IU
C3					21				21	0	
C4				17					17	0	
C5				18					18	0	
C6 - computer									0	0	Computer Lab
C7								0			split w/ IU
C8				17					17	0	
C9				20					20	0	
Gym									0	0	Gym
Music									0	0	Music
									0	0	
									0	0	
SubTotal	48	12	70	72	64	80	79	0	425	0	
Classes	2	1	4	4	3	4	3	0	21	0	
Avg Size	24.0	12.0	17.5	18.0	21.3	20.0	26.3		20.2		Calc at 90% Util
Current Capacity	88	22	106	106	80	106	80	0	589	530	
Actual Enroll									425		Enrolled
Actual % of Max									72.2%		Avg Utilization Rate
Utiliz by Grade	0.55	0.55	0.73	0.72	0.82	0.69	0.91				

*Rooms assigned to "pull-out" special education are not considered capacity supporting

2010-11 Pearl S Buck ES Room Utilization											
Utilization Room	1/2 K	K	1	2	3	4	5	SCSE*	SubTotals		Notes
									General	SCSE*	
A1								0			Reading/Speech
A2	20								20	0	
A3	42								42	0	
A4		10							10	0	
A5			20						20	0	
A6								0			Split
A7			20						20	0	
A8			21						21	0	
A9			20						20	0	
Art									0	0	Art
B1							26		26	0	
B2							27		27	0	
B3							27		27	0	
B4								21	21	0	
B5								21	21	0	
B6								21	21	0	
B7								21	21	0	
B8					21				21	0	
B9					21				21	0	
C1								6			IU
C2								8			IU
C3					20				20	0	
C4				21					21	0	
C5				20					20	0	
C6									0	0	
C7								0			AE - split w/ 1/2 IU
C8				21					21	0	
C9				20					20	0	
Gym									0	0	Gym
Music									0	0	Music
									0	0	
									0	0	
SubTotal	62	10	81	82	62	80	84	0	461	0	
Classes	2	1	4	4	3	3	4	0	21	0	
Avg Size	31.0	10.0	20.3	20.5	20.7	26.7	21.0		22.0		Calc at 90% Util
Current Capacity	88	22	106	106	80	80	106	0	589	530	
Actual Enroll									461		Enrolled
Actual % of Max									78.3%		Avg Utilization Rate
Utilization by Grade	0.70	0.45	0.84	0.82	0.79	0.92	0.72				

*Rooms assigned to "pull-out" special education are not considered capacity supporting

Samuel Everitt ES

Historic Students Assigned to Classrooms by Year/Grade

Grade Year	1/2 K	K	1	2	3	4	5	SCSE*	SubTotals		School Total
									General	SCSE	
2010-11	43	31	69	72	57	73	75	0	420	0	420
2011-12	41	33	62	62	72	56	72	0	398	0	398
2012-13	22	20	69	71	60	68	57	0	367	0	367
2013-14	38	22	72	71	71	61	63	0	398	0	398
4-Year Average	36	27	68	69	65	65	67	0	396	0	396
October 2013 Enroll	37	22	72	69	71	62	64				397

**Base	
Capacity	Utilization
420	86.2%
398	81.7%
367	78.9%
397	85.4%
396	83.1%
-2	

Current Capacity

	Clrms	Music	Art	Cmptr	SE*	SCSE	Other**	IU	Stations	Stu/Sta	Capacity
1/2 day K	1								1	44	44
Full-day K	1								1	22	22
Grades 1-5	15								15	27	399
SCSE (1-5)									0 / 0	12	0
Non-Capacity		1	1		3			2	7	0	

*SE: pull-out use in full size rooms

Subtotal >> 465

**Other: full size spaces which could support capacity

Utilization Rate (Greater of school average or 90%) >> 90.0%

Capacity supporting spaces are shaded >>



Total >> 419

Potential Capacity

	Clrms	Music	Art	Cmptr	SE*	SCSE	Other**	IU	Stations	Stu/Sta	Capacity
1/2 day K	1								1	44	44
Full-day K	1								1	22	22
Grades 1-5	15								15 / 0	27	399
SCSE (1-5)									0 / 0	12	0
Non-Capacity		1	1		3			2	7	0	

*SE: pull-out use in full size rooms

Subtotal >> 465

**Other: full size spaces which could support capacity

Utilization Rate (Greater of school average or 90%) >> 90.0%

Description of Changes:

1. None

Total >> 419

Max Class Size	1/2 K	K	1	2	3	4	5	SCSE*
Gen/MS Core	44	22	24	25	26	29	29	12
MS Sci/Labs								
MS Bus/Art/Tech								
Used in Capacity Calc	44	22			27			12

*Only self-contained special education, not pull-out SE programming, is considered capacity supporting

**Base Capacity: calculated based upon current grade/use assignment at the school

***Possible Capacity: calculated with greater of average utilization

2013-14 Samuel Everitt ES Room Utilization												
Utilization Room	1/2 K	K	1	2	3	4	5	SCSE*	SubTotals		Current Use and Notes	
									General	SCSE*		
2A								5			IU - split	
3A						20			20	0		
5A						21			21	0		
6A						20			20	0		
7A								9			IU	
8A								0			Title 1/Speech-split	
9A								21	21	0		
10A								21	21	0		
11A								21	21	0		
12A								0			SE/OT/ELL	
1B					24				24	0		
2B					23				23	0		
3B					24				24	0		
4B				24					24	0		
5B				23					23	0		
6B				24					24	0		
7B	38								38	0		
8B								0			SE	
9B			24						24	0		
10B			24						24	0		
11B			24						24	0		
12B		22							22	0		
									0	0		
									0	0		
SubTotal	38	22	72	71	71	61	63	0	398	0		
Classes	1	1	3	3	3	3	3	0	17	0		
Avg Size	38.0	22.0	24.0	23.7	23.7	20.3	21.0		23.4		Calc at 90% Util	
Current Capacity	44	22	80	80	80	80	80	0	465	419		
Actual Enroll									397		Enrolled	
Actual % of Max	(current average building utilization)								85.4%			Avg Utilization Rate
Utiliz by Grade	0.86	1.00	1.00	0.95	0.91	0.70	0.72					

*Rooms assigned to "pull-out" special education are not considered capacity supporting

2012-13 Samuel Everitt ES Room Utilization												
Utilization Room	1/2 K	K	1	2	3	4	5	SCSE*	SubTotals		Notes	
									General	SCSE*		
2A								0			SE	
3A						23			23	0		
5A						22			22	0		
6A						23			23	0		
7A								8			IU	
8A								0			Title 1/Speech	
9A								19	19	0		
10A								19	19	0		
11A								19	19	0		
12A								0			SE/OT/ELL	
1B					20				20	0		
2B					20				20	0		
3B					20				20	0		
4B				23					23	0		
5B				24					24	0		
6B				24					24	0		
7B		20							20	0		
8B								0			SE	
9B			23						23	0		
10B			23						23	0		
11B			23						23	0		
12B	22								22	0		
									0	0		
									0	0		
SubTotal	22	20	69	71	60	68	57	0	367	0		
Classes	1	1	3	3	3	3	3	0	17	0		
Avg Size	22.0	20.0	23.0	23.7	20.0	22.7	19.0		21.6		Calc at 90% Util	
Current Capacity	44	22	80	80	80	80	80	0	465	419		
Actual Enroll									367		Enrolled	
Actual % of Max	(current average building utilization)								78.9%			Avg Utilization Rate
Utiliz by Grade	0.5	0.9091	0.9583	0.9467	0.7692	0.7816	0.6552					

*Rooms assigned to "pull-out" special education are not considered capacity supporting

2011-12 Samuel Everitt ES Room Utilization											
Utilization Room	1/2 K	K	1	2	3	4	5	SCSE*	SubTotals		Notes
									General	SCSE*	
2A								0			SE
3A						19			19	0	
5A						19			19	0	
6A						18			18	0	
7A								10			IU
8A								0			Title 1/Speech
9A							24		24	0	
10A							24		24	0	
11A							24		24	0	
12A								0			SE/OT/ELL
1B					24				24	0	
2B					24				24	0	
3B					24				24	0	
4B				21					21	0	
5B				20					20	0	
6B				21					21	0	
7B		19							19	0	
8B		14							14	0	
9B			20						20	0	
10B			21						21	0	
11B			21						21	0	
12B	41								41	0	
									0	0	
									0	0	
SubTotal	41	33	62	62	72	56	72	0	398	0	
Classes	1	2	3	3	3	3	3	0	18	0	
Avg Size	41.0	16.5	20.7	20.7	24.0	18.7	24.0		22.1		Calc at 90% Util
Current Capacity	44	44	80	80	80	80	80	0	487	438	
Actual Enroll									398		Enrolled
Actual % of Max (current average building utilization)									81.7%		Avg Utilization Rate
Utilization by Grade	0.9318	0.75	0.8611	0.8267	0.9231	0.6437	0.8276				

*Rooms assigned to "pull-out" special education are not considered capacity supporting

2010-11 Samuel Everitt ES Room Utilization											
Utilization Room	1/2 K	K	1	2	3	4	5	SCSE*	SubTotals		Notes
									General	SCSE*	
2A								0			SE
3A						25			25	0	
5A						24			24	0	
6A						24			24	0	
7A								8			IU
8A								0			Title 1/Speech
9A							25		25	0	
10A							25		25	0	
11A							25		25	0	
12A								0			SE/OT/ELL
1B					19				19	0	
2B					19				19	0	
3B					19				19	0	
4B				24					24	0	
5B				24					24	0	
6B				24					24	0	
7B		20							20	0	
8B		11							11	0	
9B			23						23	0	
10B			23						23	0	
11B			23						23	0	
12B	43								43	0	
									0	0	
									0	0	
									0	0	
SubTotal	43	31	69	72	57	73	75	0	420	0	
Classes	1	2	3	3	3	3	3	0	18	0	
Avg Size	43.0	15.5	23.0	24.0	19.0	24.3	25.0		23.3		Calc at 90% Util
Current Capacity	44	44	80	80	80	80	80	0	487	438	
Actual Enroll									420		Enrolled
Actual % of Max (current average building utilization)									86.2%		Avg Utilization Rate
Utilization by Grade	0.9773	0.7045	0.9583	0.96	0.7308	0.8391	0.8621				

*Rooms assigned to "pull-out" special education are not considered capacity supporting

Ferderbar ES

Historic Students Assigned to Classrooms by Year/Grade

Grade Year	1/2 K	K	1	2	3	4	5	SCSE*	SubTotals		School Total
									General	SCSE	
2010-11	65	17	90	89	95	111	111	0	578	0	578
2011-12	80		88	88	88	115	111	0	570	0	570
2012-13	80		88	88	88	135	112	0	591	0	591
2013-14	40	22	112	110	108	90	85	0	567	0	567
4-Year Average	66	20	95	94	95	113	105	0	577	0	577

**Base	
Capacity	Utilization
578	90.0%
570	91.9%
591	91.4%
586	84.3%
581	89.4%

October 2013 Enroll	60	22	112	110	108	90	84				586
----------------------------	-----------	-----------	------------	------------	------------	-----------	-----------	--	--	--	------------

-5

Current Capacity

	Clrms	Music	Art	Cmptr	SE*	SCSE	Other**	IU	Stations	Stu/Sta	Capacity
1/2 day K	2								2	44	88
Full-day K	1								1	22	22
Grades 1-5	22								22	27	585.2
SCSE (1-5)									0 / 0	12	0
Non-Capacity			1		2				3	0	

*SE: pull-out use in full size rooms

Subtotal >> 695

**Other: full size spaces which could support capacity

Utilization Rate (Greater of school average or 90%) >> 90.0%

Capacity supporting spaces are shaded >>



Total >> **626**

Potential Capacity

	Clrms	Music	Art	Cmptr	SE*	SCSE	Other**	IU	Stations	Stu/Sta	Capacity
1/2 day K	2								2	44	88
Full-day K	1								1	22	22
Grades 1-5	22								22 / 0	27	585
SCSE (1-5)									0 / 0	12	0
Non-Capacity			1		2				3	0	

*SE: pull-out use in full size rooms

Subtotal >> 695

**Other: full size spaces which could support capacity

Utilization Rate (Greater of school average or 90%) >> 90.0%

Description of Changes:

1. None

Total >> **626**

Max Class Size	1/2 K	K	1	2	3	4	5	SCSE*
Gen/MS Core	44	22	24	25	26	29	29	12
MS Sci/Labs								
MS Bus/Art/Tech								
Used in Capacity Calc	44	22			27			12

*Only self-contained special education, not pull-out SE programming, is considered capacity supporting

**Base Capacity: calculated based upon current grade/use assignment at the school

***Possible Capacity: calculated with greater of average utilization

2013-14 Ferderbar ES Room Utilization											
Utilization Room	1/2 K	K	1	2	3	4	5	SCSE*	SubTotals		Current Use and Notes
									General	SCSE*	
C1			23						23	0	
C2		22							22	0	
C3	28								28	0	
B1			22						22	0	
B2			22						22	0	
B3				21					21	0	
B4			23						23	0	
B5			22						22	0	
B6				22					22	0	
B7					21				21	0	
B8				22					22	0	
B9					21				21	0	
B10				22					22	0	
B11				23					23	0	
B12					21				21	0	
A1							27		27	0	
A2							29		29	0	
A3					23				23	0	
A4											SE-split
A5											SE-split
A6					22				22	0	
A7							29		29	0	
A8						22			22	0	
A9						23			23	0	
A10						23			23	0	
A11-Art									0	0	
A12						22			22	0	
D1	12								12	0	
									0	0	
									0	0	
									0	0	
									0	0	
SubTotal	40	22	112	110	108	90	85	0	567	0	
Classes	2	1	5	5	5	4	3	0	25	0	
Avg Size	20.0	22.0	22.4	22.0	21.6	22.5	28.3		22.7		Calc at 90% Util
Current Capacity	88	22	133	133	133	106	80	0	695	626	
Actual Enroll									586		Enrolled
Actual % of Max									84.3%		Avg Utilization Rate
Utiliz by Grade	0.45	1.00	0.93	0.88	0.83	0.78	0.98				

*Rooms assigned to "pull-out" special education are not considered capacity supporting

2012-13 Ferderbar ES Room Utilization											
Utilization Room	1/2 K	K	1	2	3	4	5	SCSE*	SubTotals		Notes
									General	SCSE*	
C1			23						23	0	
C2	40								40	0	
C3	40								40	0	
B1			22						22	0	
B2			22						22	0	
B3			21						21	0	
B4				23					23	0	
B5				22					22	0	
B6				22					22	0	
B7				21					21	0	
B8					22				22	0	
B9					21				21	0	
B10					22				22	0	
B11					23				23	0	
B12						21			21	0	
A1						28			28	0	
A2						29			29	0	
A3						29			29	0	
A4											title 1
A5											se
A6											se-split
A7							29		29	0	
A8						28			28	0	IU
A9							28		28	0	
A10							29		29	0	
A11-Art									0	0	
A12							26		26	0	
									0	0	
									0	0	
									0	0	
SubTotal	80	0	88	88	88	135	112	0	591	0	
Classes	2	0	4	4	4	5	4	0	23	0	
Avg Size	40.0		22.0	22.0	22.0	27.0	28.0		25.7		Calc at 90% Util
Current Capacity	88	0	106	106	106	133	106	0	647	582	
Actual Enroll									591		Enrolled
Actual % of Max									91.4%		Avg Utilization Rate
Utiliz by Grade	0.9091		0.9167	0.88	0.8462	0.931	0.9655				

*Rooms assigned to "pull-out" special education are not considered capacity supporting

2011-12 Ferderbar ES Room Utilization											
Utilization Room	1/2 K	K	1	2	3	4	5	SCSE*	SubTotals		Notes
									General	SCSE*	
C1			23						23	0	
C2	40								40	0	
C3	40								40	0	
B1			22						22	0	
B2			22						22	0	
B3			21						21	0	
B4				23					23	0	
B5				22					22	0	
B6				22					22	0	
B7				21					21	0	
B8					22				22	0	
B9					21				21	0	
B10					22				22	0	
B11					23				23	0	
B12											split SE
A1							28		28	0	
A2							29		29	0	
A3							29		29	0	
A4											Title 1
A5											SE
A6											SE-split
A7							29		29	0	
A8							28		28	0	
A9							28		28	0	
A10							29		29	0	
A11-Art									0	0	art
A12							26		26	0	
									0	0	
									0	0	
SubTotal	80	0	88	88	88	115	111	0	570	0	
Classes	2	0	4	4	4	4	4	0	22	0	
Avg Size	40.0		22.0	22.0	22.0	28.8	27.8		25.9		Calc at 90% Util
Current Capacity	88	0	106	106	106	106	106	0	620	558	
Actual Enroll									570		Enrolled
Actual % of Max									91.9%		Avg Utilization Rate
Utiliz by Grade	0.9091		0.9167	0.88	0.8462	0.9914	0.9569				

*Rooms assigned to "pull-out" special education are not considered capacity supporting

2010-11 Ferderbar ES Room Utilization											
Utilization Room	1/2 K	K	1	2	3	4	5	SCSE*	SubTotals		Notes
									General	SCSE*	
C1	22								22	0	
C2	43								43	0	
C3		17							17	0	
B1			22						22	0	
B2			22						22	0	
B3			23						23	0	
B4			23						23	0	
B5				22					22	0	
B6				24					24	0	
B7				21					21	0	
B8				22					22	0	
B9					21				21	0	
B10					25				25	0	
B11					23				23	0	
B12					26				26	0	
A1							28		28	0	
A2							27		27	0	
A3							27		27	0	
A4								0			Split
A5								0			SE
A6								0			Split
A7							29		29	0	
A8							28		28	0	
A9							28		28	0	
A10									0	0	Art
A11-Art							29		29	0	
A12							26		26	0	
									0	0	
									0	0	
SubTotal	65	17	90	89	95	111	111	0	578	0	
Classes	2	1	4	4	4	4	4	0	23	0	
Avg Size	32.5	17.0	22.5	22.3	23.8	27.8	27.8		25.1		Calc at 90% Util
Current Capacity	88	22	106	106	106	106	106	0	642	578	
Actual Enroll									578		Enrolled
Actual % of Max									90.0%		Avg Utilization Rate
Utilization by Grade	0.7386	0.7727	0.9375	0.89	0.9135	0.9569	0.9569				

*Rooms assigned to "pull-out" special education are not considered capacity supporting

Heckman ES

Historic Students Assigned to Classrooms by Year/Grade

Grade Year	1/2 K	K	1	2	3	4	5	SCSE*	SubTotals		School Total
									General	SCSE	
2010-11	57		73	77	76	74	104	0	461	0	461
2011-12	72		92	82	87	93	85	0	511	0	511
2012-13	72		87	80	78	84	86	0	487	0	487
2013-14	53	22	77	86	76	80	83	0	477	0	477
4-Year Average	64	22	82	81	79	83	90	0	484	0	484
October 2013 Enroll	36	30	78	86	76	80	81	0			467

**Base	
Capacity	Utilization
461	77.7%
511	86.1%
487	85.9%
467	83.1%
482	83.2%
15	

Current Capacity

	Clrms	Music	Art	Cmptr	SE*	SCSE	Other**	IU	Stations	Stu/Sta	Capacity
1/2 day K	2								2	44	88
Full-day K	1								1	22	22
Grades 1-5	17								17	27	452.2
SCSE (1-5)									0 / 0	12	0
Non-Capacity		2	1	1	4				8	0	

*SE: pull-out use in full size rooms

Subtotal >> 562

**Other: full size spaces which could support capacity Utilization Rate (Greater of school average or 90%) >> 90.0%

Capacity supporting spaces are shaded >>



Total >> 506

Potential Capacity

	Clrms	Music	Art	Cmptr	SE*	SCSE	Other**	IU	Stations	Stu/Sta	Capacity
1/2 day K	2								2	44	88
Full-day K	1								1	22	22
Grades 1-5	17	1			1				19 / 0	27	505
SCSE (1-5)									0 / 0	12	0
Non-Capacity		1	1	1	3				6	0	

*SE: pull-out use in full size rooms

Subtotal >> 615

**Other: full size spaces which could support capacity Utilization Rate (Greater of school average or 90%) >> 90.0%

Description of Changes:

1. Allocate one of the current Music rooms to general instruction; compensate with lesson room elsewhere
2. Re-assign one full-size SE pull-out room to capacity use; subdivide a full size room to compensate

Total >> 554

Max Class Size	1/2 K	K	1	2	3	4	5	SCSE*
Gen/MS Core	44	22	24	25	26	29	29	12
MS Sci/Labs								
MS Bus/Art/Tech								
Used in Capacity Calc	44	22	27					12

*Only self-contained special education, not pull-out SE programming, is considered capacity supporting

**Base Capacity: calculated based upon current grade/use assignment at the school

***Possible Capacity: calculated with greater of average utilization

2013-14 Heckman ES Room Utilization											
Utilization Room	1/2 K	K	1	2	3	4	5	SCSE*	SubTotals		Current Use and Notes
									General	SCSE*	
A101				21					21	0	
A102				21					21	0	
A103					24				24	0	
A104					26				26	0	
A105				22					22	0	
A106			18						18	0	
A107			20						20	0	
A108			20						20	0	
A109				22					22	0	
A201							27		27	0	
A202							27		27	0	
A203							26		26	0	
A204							27		27	0	
A205								12	0	0	Gr 5; split
A206							27		27	0	
A207							29		29	0	
A208								11	0	0	Gr 4; split
A209					26				26	0	
B101	26								26	0	AM/PM
B103								6	0	0	Gr 2-3; split
B104	27								27	0	AM only; PM SE
B105			19						19	0	1st gr
B106		22							22	0	
B102									0	0	Art
Modular 1									0	0	Music
Modular 2									0	0	AE/PT
Modular 3									0	0	Computer
Modular 4									0	0	Inst. Music
SubTotal	53	22	77	86	76	80	83	0	477	0	
Classes	2	1	4	4	3	3	3	0	20	0	
Avg Size	26.5	22.0	19.3	21.5	25.3	26.7	27.7		23.9		Calc at 90% Util
Current Capacity	88	22	106	106	80	80	80	0	562	506	
Actual Enroll									467		Enrolled
Actual % of Max	(current average building utilization)									83.1%	Avg Utilization Rate
Utiliz by Grade	0.60	1.00	0.80	0.86	0.97	0.92	0.95				

*Rooms assigned to "pull-out" special education are not considered capacity supporting

2012-13 Heckman ES Room Utilization											
Utilization Room	1/2 K	K	1	2	3	4	5	SCSE*	SubTotals		Notes
									General	SCSE*	
A101				21					21	0	
A102				21					21	0	
A103								11	0	0	
A104					26				26	0	
A105				19					19	0	
A106			21						21	0	
A107					26				26	0	
A108			22						22	0	
A109				19					19	0	
A201							21		21	0	
A202							28		28	0	
A203							27		27	0	
A204							29		29	0	
A205							22		22	0	
A206							22		22	0	
A207							21		21	0	
A208								20	0	0	Gr 4-5
A209					26				26	0	
B101	34								34	0	
B103								19	0	0	Gr K-FD,1,2
B104			22						22	0	
B104			22						22	0	*? Rm #?
B106	38								38	0	
SubTotal	72	0	87	80	78	84	86	0	487	0	
Classes	2	0	4	4	3	3	4	0	20	0	
Avg Size	36.0		21.8	20.0	26.0	28.0	21.5		24.4		Calc at 90% Util
Current Capacity	88	0	106	106	80	80	106	0	567	510	
Actual Enroll									487		Enrolled
Actual % of Max	(current average building utilization)									85.9%	Avg Utilization Rate
Utiliz by Grade	0.8182		0.9063	0.8	1	0.9655	0.7414				

*Rooms assigned to "pull-out" special education are not considered capacity supporting

2011-12 Heckman ES Room Utilization											
Utilization Room	1/2 K	K	1	2	3	4	5	SCSE*	SubTotals		Notes
									General	SCSE*	
A101			23						23	0	
A102				21					21	0	
A103					22				22	0	
A104					22				22	0	
A105				22					22	0	
A106				21					21	0	
A107					21				21	0	
A108			23						23	0	
A109				18					18	0	
A201							28		28	0	
A202							24		24	0	
A203							21		21	0	
A204							24		24	0	
A205							29		29	0	
A207							24		24	0	
A207							28		28	0	
A209					22				22	0	
A209								18	0	0	Gr 4-5
B101	38								38	0	
B103								7	0	0	
B103								12	0	0	Gr 1-2
B104			23						23	0	
B105			23						23	0	
B106	34								34	0	
C3								7	0	0	SCSE/Rdg
									0	0	
SubTotal	72	0	92	82	87	93	85	0	511	0	
Classes	2	0	4	4	4	4	3	0	21	0	
Avg Size	36.0		23.0	20.5	21.8	23.3	28.3		24.3		Calc at 90% Util
Current Capacity	88	0	106	106	106	106	80	0	593	534	
Actual Enroll									511		Enrolled
Actual % of Max									86.1%		Avg Utilization Rate
Utiliz by Grade	0.8182		0.9583	0.82	0.8365	0.8017	0.977				

*Rooms assigned to "pull-out" special education are not considered capacity supporting

2010-11 Heckman ES Room Utilization											
Utilization Room	1/2 K	K	1	2	3	4	5	SCSE*	SubTotals		Notes
									General	SCSE*	
A101			18						18	0	
A102				20					20	0	
A103					18				18	0	
A104					20				20	0	
A105				20					20	0	
A106				18					18	0	
A107					19				19	0	
A108			19						19	0	
A109				19					19	0	
A201							25		25	0	
A202							25		25	0	
A203							27		27	0	
A204							24		24	0	
A205							27		27	0	
A206							25		25	0	
A207							25		25	0	
A208								19	0	0	Gr 4-5
A209					19				19	0	
B101	19								19	0	AM
B103								12	0	0	Gr K-2
B104			19						19	0	
B105			17						17	0	
B106	38								38	0	AM/PM
C1								9	0	0	
									0	0	
SubTotal	57	0	73	77	76	74	104	0	461	0	
Classes	2	0	4	4	4	3	4	0	21	0	
Avg Size	28.5		18.3	19.3	19.0	24.7	26.0		22.0		Calc at 90% Util
Current Capacity	88	0	106	106	106	80	106	0	593	534	
Actual Enroll									461		Enrolled
Actual % of Max									77.7%		Avg Utilization Rate
Utilization by Grade	0.6477		0.7604	0.77	0.7308	0.8506	0.8966				

*Rooms assigned to "pull-out" special education are not considered capacity supporting

Hoover ES

Historic Students Assigned to Classrooms by Year/Grade

Grade Year	1/2 K	K	1	2	3	4	5	SCSE*	SubTotals		School Total
									General	SCSE	
2010-11	79	17	106	90	103	118	112	0	625	0	625
2011-12	85	13	112	112	93	109	121	0	645	0	645
2012-13	85	35	83	105	93	98	121	0	620	0	620
2013-14	43	44	80	157	113	126	109	13	672	13	685
4-Year Average	73	27	95	116	101	113	116	3	641	3	644
October 2013 Enroll	43	44	121	113	106	126	103	13			669

**Base	
Capacity	Utilization
625	89.9%
645	89.4%
620	81.5%
669	81.5%
640	85.5%
-29	

Current Capacity

	Cirms	Music	Art	Cmptr	SE*	SCSE	Other**	IU	Stations	Stu/Sta	Capacity
1/2 day K	2								2	44	88
Full-day K	2								2	22	44
Grades 1-5	25								25	27	665
SCSE (1-5)					3	2			2 / 3	12	24
Non-Capacity		2	1					3	6	0	

*SE: pull-out use in full size rooms **Subtotal >> 821**
 **Other: full size spaces which could support capacity Utilization Rate (Greater of school average or 90%) >> 90.0%

Capacity supporting spaces are shaded >>



Total >> 739

Potential Capacity

	Cirms	Music	Art	Cmptr	SE*	SCSE	Other**	IU	Stations	Stu/Sta	Capacity
1/2 day K	2								2	44	88
Full-day K	2								2	22	44
Grades 1-5	25	1							26 / 0	27	692
SCSE (1-5)					3	2			2 / 3	12	24
Non-Capacity		1	1					3	5	0	

*SE: pull-out use in full size rooms **Subtotal >> 848**
 **Other: full size spaces which could support capacity Utilization Rate (Greater of school average or 90%) >> 90.0%

Total >> 763

Description of Changes:

1. Allocate one of the current Music rooms to general instruction; compensate with lesson room elsewhere

Max Class Size	1/2 K	K	1	2	3	4	5	SCSE*
Gen/MS Core	44	22	24	25	26	29	29	12
MS Sci/Labs								
MS Bus/Art/Tech								
Used in Capacity Calc	44	22		27				12

*Only self-contained special education, not pull-out SE programming, is considered capacity supporting
 **Base Capacity: calculated based upon current grade/use assignment at the school
 ***Possible Capacity: calculated with greater of average utilization

2013-14 Hoover ES Room Utilization												
Utilization Room	1/2 K	K	1	2	3	4	5	SCSE*	SubTotals		Current Use and Notes	
									General	SCSE*		
A2	15								15	0		
A3								7			IU	
A4		22							22	0		
A5		22							22	0		
A6	28								28	0		
B1				22					22	0		
B2			22						22	0		
B3				23					23	0		
B4				22					22	0		
B5			18						18	0		
B6			18						18	0		
B7				22					22	0		
B8				22					22	0		
B9				23					23	0		
B10								12			SE	
B11			22						22	0		
B12				23					23	0		
C1						24			24	0		
C2						27			27	0		
C3						26			26	0		
C4								5			IU	
C5						25			25	0		
C6					23				23	0		
C7					21				21	0		
C8					21				21	0		
C9					22				22	0		
C10					26				26	0		
D1								8			IU	
D2								8	0	8	IU-SCSE	
D3								12			SPLIT Lrn Sup 3-4	
D4						24			24	0		
D5								5	0	5	IU-SCSE	
D6								12			Intervention	
D7							28		28	0		
D8							26		26	0		
D9							27		27	0		
D10							28		28	0		
(2) rooms: A-1 + Music Art Rm									0	0	Music	
									0	0	Art	
									0	0		
SubTotal	43	44	80	157	113	126	109	13	672	13		
Classes	2	2	4	7	5	5	4	2	29	2		
Avg Size	21.5	22.0	20.0	22.4	22.6	25.2	27.3	6.5	23.2	6.5	Calc at 90% Util	
Current Capacity	88	44	106	186	133	133	106	24	821	739		
Actual Enroll											669	Enrolled
Actual % of Max	(current average building utilization)										81.5%	Avg Utilization Rate
Utiliz by Grade	0.49	1.00	0.83	0.90	0.87	0.87	0.94	0.54				

2012-13 Hoover ES Room Utilization												
Utilization Room	1/2 K	K	1	2	3	4	5	SCSE*	SubTotals		Notes	
									General	SCSE*		
A2									0	0		
A3	16								16	0	fd k	
A4	32								32	0	1/2 k	
A5	37								37	0	1/2 k	
A6								8			IU	
B1		14							14	0	P1	
B2			22						22	0		
B3				20					20	0		
B4				23					23	0		
B5			23						23	0		
B6			20						20	0		
B7				21					21	0		
B8		21							21	0	P1	
B9				21					21	0		
B10								12			SE	
B11			18						18	0		
B12				20					20	0		
C1						26			26	0		
C2						27			27	0		
C3						19			19	0		
C4								12			SE	
C5						26			26	0		
C6					23				23	0		
C7					22				22	0		
C8					26				26	0		
C9								26			SE	
C10					22				22	0		
D1								8			IU	
D2								5			IU	
D3								12			SE	
D4								6			IU	
D5								7			IU	
D6							12		12	0		
D7							28		28	0		
D8							26		26	0		
D9							27		27	0		
D10							28		28	0		
									0	0		
SubTotal	85	35	83	105	93	98	121	0	620	0		
Classes	3	2	4	5	4	4	5	0	27	0		
Avg Size	28.3	17.5	20.8	21.0	23.3	24.5	24.2		23.0		Calc at 90% Util	
Current Capacity	132	44	106	133	106	106	133	0	761	685		
Actual Enroll											620	Enrolled
Actual % of Max	(current average building utilization)										81.5%	Avg Utilization Rate
Utiliz by Grade	0.6439	0.7955	0.8646	0.84	0.8942	0.8448	0.8345					

2011-12 Hoover ES Room Utilization												
Utilization Room	1/2 K	K	1	2	3	4	5	SCSE*	SubTotals		Notes	
									General	SCSE*		
A2									0	0		
A3								5			IU	
A4	41								41	0	a/p k	
A5	44								44	0	a/p k	
A6								8			IU	
B1			20						20	0		
B2			24						24	0		
B3				23					23	0		
B4				21					21	0		
B5			20						20	0		
B6			24						24	0		
B7				19					19	0		
B8		13							13	0	P1	
B9				24					24	0		
B10								12			SE	
B11			24						24	0		
B12				25					25	0		
C1						28			28	0		
C2						28			28	0		
C3						29			29	0		
C4								12			SE	
C5						24			24	0		
C6					23				23	0		
C7					24				24	0		
C8					24				24	0		
C9								12			SE	
C10					22				22	0		
D1								8			AE Reading	
D2								12			IU	
D3											SE	
D4											IU	
D5											IU	
D6							21		21	0		
D7							25		25	0		
D8							21		21	0		
D9							27		27	0		
D10							27		27	0		
									0	0		
SubTotal	85	13	112	112	93	109	121	0	645	0		
Classes	2	1	5	5	4	4	5	0	26	0		
Avg Size	42.5	13.0	22.4	22.4	23.3	27.3	24.2		24.8		Calc at 90% Util	
Current Capacity	88	22	133	133	106	106	133	0	722	650		
Actual Enroll									645	Enrolled		
Actual % of Max	(current average building utilization)								89.4%	Avg Utilization Rate		
Utiliz by Grade	0.9659	0.5909	0.9333	0.896	0.8942	0.9397	0.8345					

2010-11 Hoover ES Room Utilization												
Utilization Room	1/2 K	K	1	2	3	4	5	SCSE*	SubTotals		Notes	
									General	SCSE*		
A2									0	0		
A3								8			IU	
A4	39								39	0	1/2 d k	
A5	40								40	0	1/2 d k	
A6								8			IU	
B1			18						18	0		
B2			24						24	0		
B3				23					23	0		
B4				23					23	0		
B5			23						23	0		
B6			19						19	0		
B7				24					24	0		
B8		17							17	0	P1	
B9				20					20	0		
B10								12			SE	
B11			22						22	0		
B12											Title 1	
C1						25			25	0		
C2						22			22	0		
C3						24			24	0		
C4								12			SE	
C5						21			21	0		
C6						26			26	0		
C7						26			26	0		
C8						25			25	0		
C9						26			26	0		
C10						26			26	0		
D1											A/E and Reading	
D2								8			IU	
D3								12			SE	
D4								8			IU	
D5								8			IU	
D6								8			IU	
D7							28		28	0		
D8							27		27	0		
D9							28		28	0		
D10							29		29	0		
									0	0		
SubTotal	79	17	106	90	103	118	112	0	625	0		
Classes	2	1	5	4	4	5	4	0	25	0		
Avg Size	39.5	17.0	21.2	22.5	25.8	23.6	28.0		25.0		Calc at 90% Util	
Current Capacity	88	22	133	106	106	133	106	0	695	626		
Actual Enroll									625	Enrolled		
Actual % of Max	(current average building utilization)								89.9%	Avg Utilization Rate		
Utilization by Grade	0.8977	0.7727	0.8833	0.9	0.9904	0.8138	0.9655					

Lower Southhampton ES

Historic Students Assigned to Classrooms by Year/Grade

Grade Year	1/2 K	K	1	2	3	4	5	SCSE*	SubTotals		School Total
									General	SCSE	
2010-11	61	12	66	100	77	79	67	0	462	0	462
2011-12	54	13	91	61	103	82	83	0	487	0	487
2012-13	42	16	87	95	68	113	90	0	511	0	511
2013-14	44	22	60	84	92	63	110	0	475	0	475
4-Year Average	50	16	76	85	85	84	88	0	484	0	484
October 2013 Enroll	44	22	60	84	92	63	110				475

**Base	
Capacity	Utilization
462	86.3%
487	86.6%
511	83.0%
475	87.2%
484	85.8%
9	

Current Capacity

	Clrms	Music	Art	Cmptr	SE*	SCSE	Other**	IU	Stations	Stu/Sta	Capacity
1/2 day K	1								1	44	44
Full-day K	1								1	22	22
Grades 1-5	18								18	27	478.8
SCSE (1-5)									0 / 0	12	0
Non-Capacity		1	1	1	3			1	7	0	

*SE: pull-out use in full size rooms Subtotal >> 545
 **Other: full size spaces which could support capacity Utilization Rate (Greater of school average or 90%) >> 90.0%

Capacity supporting spaces are shaded >> **Total >> 490**

Potential Capacity

	Clrms	Music	Art	Cmptr	SE*	SCSE	Other**	IU	Stations	Stu/Sta	Capacity
1/2 day K	1								1	44	44
Full-day K	1								1	22	22
Grades 1-5	18								18 / 0	27	479
SCSE (1-5)									0 / 0	12	0
Non-Capacity		1	1	1	3			1	7	0	

*SE: pull-out use in full size rooms Subtotal >> 545
 **Other: full size spaces which could support capacity Utilization Rate (Greater of school average or 90%) >> 90.0%

Description of Changes: Total >> 490
 1. None

Max Class Size	1/2 K	K	1	2	3	4	5	SCSE*
Gen/MS Core	44	22	24	25	26	29	29	12
MS Sci/Labs								
MS Bus/Art/Tech								
Used in Capacity Calc	44	22			27			12

*Only self-contained special education, not pull-out SE programming, is considered capacity supporting
 **Base Capacity: calculated based upon current grade/use assignment at the school
 ***Possible Capacity: calculated with greater of average utilization

2013-14 Lower Southhampton ES Room Utilization												
Utilization Room	1/2 K	K	1	2	3	4	5	SCSE*	SubTotals		Current Use and Notes	
									General	SCSE*		
1			19						19	0		
2								4			IU	
3				21					21	0		
4			21						21	0		
5				21					21	0		
6			20						20	0		
7				20					20	0		
8	44								44	0		
9				22					22	0		
10		22							22	0		
11					23				23	0		
12					23				23	0		
13								0			SE - split	
14					23				23	0		
15					23				23	0		
16						21			21	0		
17							29		29	0		
18						21			21	0		
19								0			SE - split	
20						21			21	0		
21							27		27	0		
22							27		27	0		
23							27		27	0		
24-Art									0	0	Art	
25								0			SE - split	
26-Music									0	0	Music	
Computer									0	0	split computer/AE	
AE/Speech									0	0	split computer/AE	
									0	0		
									0	0		
SubTotal	44	22	60	84	92	63	110	0	475	0		
Classes	1	1	3	4	4	3	4	0	20	0		
Avg Size	44.0	22.0	20.0	21.0	23.0	21.0	27.5		23.8		Calc at 90% Util	
Current Capacity	44	22	80	106	106	80	106	0	545	490		
Actual Enroll									475		Enrolled	
Actual % of Max	(current average building utilization)								87.2%			Avg Utilization Rate
Utiliz by Grade	1.00	1.00	0.83	0.84	0.88	0.72	0.95					

*Rooms assigned to "pull-out" special education are not considered capacity supporting

2012-13 Lower Southhampton ES Room Utilization												
Utilization Room	1/2 K	K	1	2	3	4	5	SCSE*	SubTotals		Notes	
									General	SCSE*		
1			22						22	0		
2	27								27	0		
3			22						22	0		
4			22						22	0		
5				23					23	0		
6			21						21	0		
7				24					24	0		
8	15			24					39	0		
9									0	0		
10		16							16	0		
11					22				22	0		
12					23				23	0		
13											SE-split	
14					23				23	0		
15						28			28	0		
16						28			28	0		
17							23		23	0		
18						29			29	0		
19											SE - split	
20						28			28	0		
21							23		23	0		
22							22		22	0		
23							22		22	0		
24-art									0	0	art	
25				24					24	0		
									0	0		
									0	0		
SubTotal	42	16	87	95	68	113	90	0	511	0		
Classes	2	1	4	4	3	4	4	0	22	0		
Avg Size	21.0	16.0	21.8	23.8	22.7	28.3	22.5		23.2		Calc at 90% Util	
Current Capacity	88	22	106	106	80	106	106	0	615	554		
Actual Enroll									511		Enrolled	
Actual % of Max	(current average building utilization)								83.0%			Avg Utilization Rate
Utiliz by Grade	0.4773	0.7273	0.9063	0.95	0.8718	0.9741	0.7759					

*Rooms assigned to "pull-out" special education are not considered capacity supporting

2011-12 Lower Southampton ES Room Utilization												
Utilization Room	1/2 K	K	1	2	3	4	5	SCSE*	SubTotals		Notes	
									General	SCSE*		
1			22						22	0		
2		13							13	0		
3			23						23	0		
4			23						23	0		
5				20					20	0		
6			23						23	0		
7				20					20	0		
8	35								35	0		
9				21					21	0		
10	19								19	0		
11					25				25	0		
12					26				26	0		
13								0				
14					26				26	0		
15						27			27	0		
16						27			27	0		
17							28		28	0		
18					26				26	0		
19								0				
20							28		28	0		
21							28		28	0		
22							27		27	0		
23								0				
									0	0		
									0	0		
									0	0		
SubTotal	54	13	91	61	103	82	83	0	487	0		
Classes	2	1	4	3	4	3	3	0	20	0		
Avg Size	27.0	13.0	22.8	20.3	25.8	27.3	27.7		24.4		Calc at 90% Util	
Current Capacity	88	22	106	80	106	80	80	0	562	506		
Actual Enroll									487		Enrolled	
Actual % of Max	(current average building utilization)								86.6%			Avg Utilization Rate
Utiliz by Grade	0.6136	0.5909	0.9479	0.8133	0.9904	0.9425	0.954					

2010-11 Lower Southampton ES Room Utilization												
Utilization Room	1/2 K	K	1	2	3	4	5	SCSE*	SubTotals		Notes	
									General	SCSE*		
1			22						22	0		
2		12							12	0		
3				25					25	0		
4			22						22	0		
5				25					25	0		
6			22						22	0		
7				25					25	0		
8	41								41	0		
9				25					25	0		
10	20								20	0		
11					26				26	0		
12					26				26	0		
13								0			SE	
14					25				25	0		
15						26			26	0		
16						27			27	0		
17							22		22	0		
18								0			SE	
19								0			SE	
20						26			26	0		
21							22		22	0		
22							23		23	0		
23								0			Reading/Speech	
									0	0		
									0	0		
									0	0		
SubTotal	61	12	66	100	77	79	67	0	462	0		
Classes	2	1	3	4	3	3	3	0	19	0		
Avg Size	30.5	12.0	22.0	25.0	25.7	26.3	22.3		24.3		Calc at 90% Util	
Current Capacity	88	22	80	106	80	80	80	0	536	482		
Actual Enroll									462		Enrolled	
Actual % of Max	(current average building utilization)								86.3%			Avg Utilization Rate
Utilization by Grade	0.6932	0.5455	0.9167	1	0.9872	0.908	0.7701					

*Rooms assigned to "pull-out" special education are not considered capacity supporting

Walter Miller ES

**Figures come from different varying periods; Source: recorded room assignments provided by each individual school*

Historic Students Assigned to Classrooms by Year/Grade

Grade Year	1/2 K	K	1	2	3	4	5	SCSE*	SubTotals		School Total
									General	SCSE	
2010	60		57	64	70	65	73	0	389	0	389
2011	45		68	56	65	71	68	0	373	0	373
2012	69	5	70	69	77	57	72	0	419	0	419
2013-14 (start of yr)	37	22	75	75	65	80	58	0	412	0	412
4-Year Average	53	14	68	66	69	68	68	0	398	0	398
October 2013 Enroll	37	22	75	75	64	81	59				413

**Base	
Capacity	Utilization
389	79.9%
373	76.6%
419	82.3%
413	88.8%
399	81.9%
-15	

Current Capacity

	Clrms	Music	Art	Cmptr	SE*	SCSE	Other**	IU	Stations	Stu/Sta	Capacity
1/2 day K	1								1	44	44
Full-day K	1								1	22	22
Grades 1-5	15								15	27	399
SCSE (1-5)									0 / 0	12	0
Non-Capacity		2	1	1	5			3	12	0	

*SE: pull-out use in full size rooms

Subtotal >> 465

**Other: full size spaces which could support capacity Utilization Rate (Greater of school average or 90%) >> 90.0%

Capacity supporting spaces are shaded >>



Total >> 419

Potential Capacity

Current Capacity >> 419

	Clrms	Music	Art	Cmptr	SE*	SCSE	Other**	IU	Stations	Stu/Sta	Capacity
1/2 day K	1								1	44	44
Full-day K	1								1	22	22
Grades 1-5	15	1			1				17 / 0	27	452
SCSE (1-5)									0 / 0	12	0
Non-Capacity		1	1	1	4			3	10	0	

*SE: pull-out use in full size rooms

Subtotal >> 518

**Other: full size spaces which could support capacity Utilization Rate (Greater of school average or 90%) >> 90.0%

Description of Changes:

1. Allocate one of the current Music rooms to general instruction; compensate with lesson room elsewhere
2. Re-assign one full-size SE pull-out room to capacity use; subdivide one full size room to compensate

Total >> 466

Max Class Size	1/2 K	K	1	2	3	4	5	SCSE*
Gen/MS Core	44	22	24	25	26	29	29	12
MS Sci/Labs								
MS Bus/Art/Tech								
Used in Capacity Calc	44	22			27			12

**Only self-contained special education, not pull-out SE programming, is considered capacity supporting*

***Base Capacity: calculated based upon current grade/use assignment at the school*

****Possible Capacity: calculated with greater of average utilization*

2013-14 (start of yr) Walter Miller ES Room Utilization

Utilization Room	1/2 K	K	1	2	3	4	5	SCSE*	SubTotals		Current Use and Notes	
									General	SCSE*		
B1			19						19	0		
B2			20						20	0		
B3			17						17	0		
B4			19						19	0		
B5				25					25	0		
B6								0			Ln support	
B7				25					25	0		
B8				25					25	0		
B9					22				22	0		
B10					21				21	0		
B11								7			IU	
B12					22				22	0		
C1								0			title 1	
C2-computer									0	0		
C3						26			26	0		
C4						27			27	0		
C5								6			IU	
C6						27			27	0		
C7								0			Ln support	
C8								0			Ln support	
C9							29		29	0		
C10							29		29	0		
C11 A/B								0			Reading	
C12								5			IU	
D1	37								37	0		
D3		22							22	0		
									0	0		
									0	0		
SubTotal	37	22	75	75	65	80	58	0	412	0		
Classes	1	1	4	3	3	3	2	0	17	0		
Avg Size	37.0	22.0	18.8	25.0	21.7	26.7	29.0		24.2		Calc at 90% Util	
Current Capacity	44	22	106	80	80	80	53	0	465	419		
Actual Enroll									413		Enrolled	
Actual % of Max	(current average building utilization)								88.8%			Avg Utilization Rate
Utiliz by Grade	0.84	1.00	0.78	1.00	0.83	0.92	1.00					

*Rooms assigned to "pull-out" special education are not considered capacity supporting

2012 Walter Miller ES Room Utilization

Utilization Room	1/2 K	K	1	2	3	4	5	SCSE*	SubTotals		Notes	
									General	SCSE*		
B1			24						24	0		
B2								0			Ln support	
B3			24						24	0		
B4			22						22	0		
B5				23					23	0		
B6								0			title 1	
B7				23					23	0		
B8				23					23	0		
B9					26				26	0		
B10					25				25	0		
B11								6			IU	
B12					26				26	0		
C1		5							5	0		
C2-computer									0	0		
C3						20			20	0		
C4						18			18	0		
C5								6			IU	
C6						19			19	0		
C7								0			Ln Support	
C8								0			Ln support	
C9							24		24	0		
C10							24		24	0		
C11 A/B								0			Reading/LS	
C12							24		24	0		
D1	34								34	0		
D3		35							35	0		
									0	0		
									0	0		
SubTotal	69	5	70	69	77	57	72	0	419	0		
Classes	2	1	3	3	3	3	3	0	18	0		
Avg Size	34.5	5.0	23.3	23.0	25.7	19.0	24.0		23.3		Calc at 90% Util	
Current Capacity	88	22	80	80	80	80	80	0	509	458		
Actual Enroll									419		Enrolled	
Actual % of Max	(current average building utilization)								82.3%			Avg Utilization Rate
Utiliz by Grade	0.7841	0.2273	0.9722	0.92	0.9872	0.6552	0.8276					

*Rooms assigned to "pull-out" special education are not considered capacity supporting

2011 Walter Miller ES Room Utilization											
Utilization Room	1/2 K	K	1	2	3	4	5	SCSE*	SubTotals		Notes
									General	SCSE*	
B1			23						23	0	
B2								0			Lrn support
B3			23						23	0	
B4			22						22	0	
B5				19					19	0	
B6								6			IU
B7				18					18	0	
B8				19					19	0	
B9								0			Lrn support
B10					22				22	0	
B11					22				22	0	
B12					21				21	0	
C1								6			IU
C2-computer									0	0	computer
C3						24			24	0	
C4						24			24	0	
C5								6			IU
C6						23			23	0	
C7								0			title 1
C8								0			Lrn support
C9							23		23	0	
C10							22		22	0	
C11 A/B								0			Reading/Lrn Supp
C12							23		23	0	
D1	24								24	0	
D3	21								21	0	
									0	0	
									0	0	
SubTotal	45	0	68	56	65	71	68	0	373	0	
Classes	2	0	3	3	3	3	3	0	17	0	
Avg Size	22.5		22.7	18.7	21.7	23.7	22.7		21.9		Calc at 90% Util
Current Capacity	88	0	80	80	80	80	80	0	487	438	
Actual Enroll									373		Enrolled
Actual % of Max (current average building utilization)									76.6%		Avg Utilization Rate
Utiliz by Grade	0.5114		0.9444	0.7467	0.8333	0.8161	0.7816				

*Rooms assigned to "pull-out" special education are not considered capacity supporting

2010 Walter Miller ES Room Utilization											
Utilization Room	1/2 K	K	1	2	3	4	5	SCSE*	SubTotals		Notes
									General	SCSE*	
B1			19						19	0	
B2								0			Lrn support
B3			19						19	0	
B4			19						19	0	
B5				21					21	0	
B6								6			IU
B7				21					21	0	
B8				22					22	0	
B9								0			Lrn support
B10					25				25	0	
B11					24				24	0	
B12					21				21	0	
C1								6			IU
C2-computer									0	0	computer
C3						22			22	0	
C4						22			22	0	
C5								6			IU
C6						21			21	0	
C7								6			IU
C8								0			Lrn support
C9							24		24	0	
C10							24		24	0	
C11 A/B								0			Reading/Lrn Supp
C12							25		25	0	
D1	41								41	0	
D3	19								19	0	
									0	0	
									0	0	
SubTotal	60	0	57	64	70	65	73	0	389	0	
Classes	2	0	3	3	3	3	3	0	17	0	
Avg Size	30.0		19.0	21.3	23.3	21.7	24.3		22.9		Calc at 90% Util
Current Capacity	88	0	80	80	80	80	80	0	487	438	
Actual Enroll									389		Enrolled
Actual % of Max (current average building utilization)									79.9%		Avg Utilization Rate
Utilization by Grade	0.6818		0.7917	0.8533	0.8974	0.7471	0.8391				

*Rooms assigned to "pull-out" special education are not considered capacity supporting

Albert Schweitzer ES

Historic Students Assigned to Classrooms by Year/Grade

Grade Year	1/2 K	K	1	2	3	4	5	SCSE*	SubTotals		School Total
									General	SCSE	
2010-11	40		61	80	46	73	71	11	371	11	382
2011-12	49		45	62	56	67	49	14	328	14	342
2012-13	54		60	42	70	51	69	29	346	29	375
2013-14	11	22	60	58	42	92	26	34	311	34	345
4-Year Average	39	22	57	61	54	71	54	22	339	22	361
October 2013 Enroll	11	29	71	65	49	69	54	34			382

**Base	
Capacity	Utilization
382	81.8%
342	66.9%
375	68.6%
382	81.0%
370	74.6%
-12	

Current Capacity

	Clrms	Music	Art	Cmptr	SE*	SCSE	Other**	IU	Stations	Stu/Sta	Capacity
1/2 day K	1								1	44	44
Full-day K	1								1	22	22
Grades 1-5	13								13	27	345.8
SCSE (1-5)						5			5 / 0	12	60
Non-Capacity		2	1	1	3		1	2	10	0	

*SE: pull-out use in full size rooms

Subtotal >> 472

**Other: full size spaces which could support capacity Utilization Rate (Greater of school average or 90%) >> 90.0%

Capacity supporting spaces are shaded >>



Total >> 425

Potential Capacity

	Clrms	Music	Art	Cmptr	SE*	SCSE	Other**	IU	Stations	Stu/Sta	Capacity
1/2 day K	1								1	44	44
Full-day K	1								1	22	22
Grades 1-5	13	1					1		15 / 0	27	399
SCSE (1-5)						5			5 / 0	12	60
Non-Capacity		1	1	1	3			2	8	0	

*SE: pull-out use in full size rooms

Subtotal >> 525

**Other: full size spaces which could support capacity Utilization Rate (Greater of school average or 90%) >> 90.0%

Total >> 473

Description of Changes:

1. Use current professional development room as capacity supporting
2. Use (1) Lounge area as Music classroom; reallocate Music room to SE pull-out use; return (F1 or F2)

Max Class Size	1/2 K	K	1	2	3	4	5	SCSE*
Gen/MS Core	44	22	24	25	26	29	29	12
MS Sci/Labs								
MS Bus/Art/Tech								
Used in Capacity Calc	44	22			27			12

*Only self-contained special education, not pull-out SE programming, is considered capacity supporting

**Base Capacity: calculated based upon current grade/use assignment at the school

***Possible Capacity: calculated with greater of average utilization

2013-14 Albert Schweitzer ES Room Utilization											
Utilization Room	1/2 K	K	1	2	3	4	5	SCSE*	SubTotals		Current Use and Notes
									General	SCSE*	
F1											Split - SE
F2											Split - SE
F3								5	0	5	SCSE
F4							23		23	0	
F5							23		23	0	
F6					22				22	0	
F7							22		22	0	
F8					20				20	0	
F9							26		26	0	
F10							24		24	0	
F11								0			IU
F12-computer											Computer
F13								0			Professional Devel
F14								9			IU
G1				20					20	0	
G2				19					19	0	
G3				19					19	0	
G4								10	0	10	SCSE
G5			19						19	0	
G6								6	0	6	SCSE
G7			21						21	0	
G8			20						20	0	
G9								9	0	9	SCSE
G10								4	0	4	SCSE
H1			22						22	0	
H2	11								11	0	Art
H3-Art									0	0	
H4								0			Split-speech/OT/Psych
J1 - Music									0	0	
J2/J3 - Music									0	0	
									0	0	
									0	0	
SubTotal	11	22	60	58	42	92	26	34	311	34	
Classes	1	1	3	3	2	4	1	5	15	5	
Avg Size	11.0	22.0	20.0	19.3	21.0	23.0	26.0	6.8	20.7	6.8	Calc at 90% Util
Current Capacity	44	22	80	80	53	106	27	60	472	425	
Actual Enroll										382	Enrolled
Actual % of Max	(current average building utilization)									81.0%	Avg Utilization Rate
Utiliz by Grade	0.25	1.00	0.83	0.77	0.81	0.79	0.90	0.57			

*Rooms assigned to "pull-out" special education are not considered capacity supporting

2012-13 Albert Schweitzer ES Room Utilization											
Utilization Room	1/2 K	K	1	2	3	4	5	SCSE*	SubTotals		Notes
									General	SCSE*	
F1					25				25	0	
F2						16			0	16	0
F3									0		Split - SE
F4							17		17	0	
F5							18		18	0	
F6							23		23	0	
F7					23				23	0	
F8					22				22	0	
F9							22		22	0	
F10							24		24	0	
F11								7	0	7	SCSE
F12-computer											Computer
F13								11			IU
F14								12			IU
G1				15					15	0	
G2				14					14	0	
G3				13					13	0	
G4								5	0	5	SCSE
G5			20						20	0	
G6								6	0	6	SCSE
G7			20						20	0	
G8			20						20	0	
G9								5	0	5	SCSE-life skills
G10								6	0	6	SCSE
H1	28								28	0	
H2	26								26	0	Art
H3-Art									0	0	
H4								0			IU
									0	0	
									0	0	
SubTotal	54	0	60	42	70	51	69	29	346	29	
Classes	2	0	3	3	3	3	3	5	17	5	
Avg Size	27.0		20.0	14.0	23.3	17.0	23.0	5.8	20.4	5.8	Calc at 90% Util
Current Capacity	88	0	80	80	80	80	80	60	547	492	
Actual Enroll										375	Enrolled
Actual % of Max	(current average building utilization)									68.6%	Avg Utilization Rate
Utiliz by Grade	0.6136		0.8333	0.56	0.8974	0.5862	0.7931	0.4833			

*Rooms assigned to "pull-out" special education are not considered capacity supporting

2011-12 Albert Schweitzer ES Room Utilization											
Utilization Room	1/2 K	K	1	2	3	4	5	SCSE*	SubTotals		Notes
									General	SCSE*	
F1					19				19	0	
F2								0			Split - SE
F3								0			Split - SE
F4						22			22	0	
F5						22			22	0	
F6						23			23	0	
F7					19				19	0	
F8					18				18	0	
F9							25		25	0	
F10							24		24	0	
F11								12			IU
F12-computer											Computer
F13								12			IU
F14								10			IU
G1				16					16	0	
G2				17					17	0	
G3				14					14	0	
G4				15					15	0	
G5			15						15	0	
G6											Reading
G7			17						17	0	
G8			13						13	0	
G9								8	0	8	SCSE-life skills
G10								6	0	6	SCSE
H1	16								16	0	
H2	33								33	0	Art
H3-Art									0	0	
H4								0			IU
									0	0	
									0	0	
SubTotal	49	0	45	62	56	67	49	14	328	14	
Classes	2	0	3	4	3	3	2	2	17	2	
Avg Size	24.5		15.0	15.5	18.7	22.3	24.5	7.0	19.3	7.0	Calc at 90% Util
Current Capacity	88	0	80	106	80	80	53	24	511	460	
Actual Enroll									342		Enrolled
Actual % of Max (current average building utilization)									66.9%		Avg Utilization Rate
Utiliz by Grade	0.5568		0.625	0.62	0.7179	0.7701	0.8448	0.5833			

*Rooms assigned to "pull-out" special education are not considered capacity supporting

2010-11 Albert Schweitzer ES Room Utilization											
Utilization Room	1/2 K	K	1	2	3	4	5	SCSE*	SubTotals		Notes
									General	SCSE*	
F1							24	0	24	0	
F2								0			Split - SE
F3								0			Split - SE
F4						25			25	0	
F5						25			25	0	
F6						23			23	0	
F7					23				23	0	
F8					23				23	0	
F9							23		23	0	
F10							24		24	0	
F11								11			IU
F12-computer											Computer
F13								10			IU
F14								7			IU
G1				19					19	0	
G2				19					19	0	
G3				21					21	0	
G4				21					21	0	
G5											SE
G6											Reading
G7			20						20	0	
G8			20						20	0	
G9								6	0	6	SCSE
G10								5	0	5	SCSE
H1			21						21	0	
H2	40								40	0	Art
H3-Art									0	0	
H4								0			IU
									0	0	
									0	0	
SubTotal	40	0	61	80	46	73	71	11	371	11	
Classes	1	0	3	4	2	3	3	2	16	2	
Avg Size	40.0		20.3	20.0	23.0	24.3	23.7	5.5	23.2	5.5	Calc at 90% Util
Current Capacity	44	0	80	106	53	80	80	24	467	420	
Actual Enroll									382		Enrolled
Actual % of Max (current average building utilization)									81.8%		Avg Utilization Rate
Utilization by Grade	0.9091		0.8472	0.8	0.8846	0.8391	0.8161	0.4583			

*Rooms assigned to "pull-out" special education are not considered capacity supporting

Maple Point Middle School

Historic Students Assigned to Classrooms by Year/Grade

Grade Year	1/2 K	K	1	2	3	4	5	SCSE*	6	7	8	SCSE*	SubTotals		School Total
													General	SCSE	
2010-11													0	0	0
2011-12													0	0	0
2012-13													0	0	0
2013-14													0	0	0
4-Year Average													0	0	0

**Base	
Capacity	Utilization
1340	61.7%
1340	85.0%
367	

October 2013 Enroll	312	325	336	973
---------------------	-----	-----	-----	------------

Current Capacity

	Clrms	Music	Art	Cmptr	Tech	Sci	PE	ConSci	SE*	SCSE	Other**	IU	Subtotal		Total
Grades 6-8 (gen stations)	37			4			3	2					46	35	1610
Grades 6-8 (Sci/Lab)						6							6	30	180
Grades 6-8 (Bus/Art/Tech)		3	3		3								9	20	180
SCSE (6-8)													0	12	0
Non-Capacity											11	8	19	0	

*SE: pull-out use in full size rooms

Subtotal >> 1970

**Other: full size or LGI rooms or spaces which could provide full size rooms

Utilization Rate (Greater of school average or 90%) >> 80.0%

Capacity supporting spaces are shaded >>



Total >> **1576**

Potential Capacity

	Clrms	Music	Art	Cmptr	Tech	Sci	PE	ConSci	SE*	SCSE	Other**	IU	Subtotal		Total
Grades 6-8 (gen stations)	37			4			3	2			2		48	35	1680
Grades 6-8 (Sci/Lab)						6							6	30	180
Grades 6-8 (Bus/Art/Tech)		3	3		3								9	20	180
SCSE (6-8)													0	12	0
Non-Capacity											9	8	17	0	

*SE: pull-out use in full size rooms

Subtotal >> 2040

**Other: full size or LGI rooms or spaces which could provide full size rooms

Utilization Rate (Greater of school average or 80%) >> 80.0%

Total >> **1632**

Description of Changes:

1. Combine resource use of regular rooms into fully scheduled rooms; current rooms 1/2 scheduled

Max Class Size	1/2 K	K	1	2	3	4	5	SCSE*	6	7	8	SCSE*
Gen/MS Core	44	22	24	25	26	29	29	12	35	35	35	12
MS Sci/Labs									30	30	30	
MS Bus/Art/Tech									20	20	20	
Used in Capacity Calc	44	22			27			12				12

*Only self-contained special education, not pull-out SE programming, is considered capacity supporting

**Base Capacity: calculated based upon current grade/use assignment at the school

***Possible Capacity: calculated with greater of average utilization

2013-14 Maple Point Middle School Room Utilization

*Total periods/day = 7; 6 day cycle; Tchrs 5 of 7 pds

Utilization Room	1/2 K	K	1	2	3	4	5	SCSE*	Rm Type	Gen Ed Pds	Max Capac	Current Utilization	Capacity (80%) Gen SCSE*	Current Use and Notes
a1022									Lesson	4	0	57%		
A206									Rsrce	2	0	29%	0	gen resource
A207									CR	2	35	29%	28	
A210									SGI	2	0	29%	0	2p gen; 1p resrce
A211									CR	2	35	29%	28	2p gen; 1p resrce
A212									Rsrce	3	0	43%	0	read'g; resource
A213									CR	5	35	71%	28	
A214									CR	5	35	71%	28	
A215									CR	5	35	71%	28	
A216									CR	5	35	71%	28	
A217									-					no room this num
A218									Rsrce	5	0	71%	0	read'g; resource
A219									CR	5	35	71%	28	
A220									CR	5	35	71%	28	
A221									CR		35	0%	28	
A222									-					Book Room
A223									-					Book Room
A224									CR	5	35	71%	28	
A225									CR	5	35	71%	28	not currently used
A226									CR	5	35	71%	28	not currently used
A227									Rsrce	3	0	43%	0	read'g; resource
A228									-					no room this num
A229									CR	5	35	71%	28	
A230									CR	5	35	71%	28	
A231									CR	5	35	71%	28	
A232									CR	5	35	71%	28	
A233									CR	5	35	71%	28	
A234									CR	3	35	43%	28	3p gen; 1p resrce
A235									SGI	7	0	100%	0	
A237									CR	5	35	71%	28	
A239									IU		0	0%	0	
B207									Sci Lab	4	30	57%	24	
B208									Sci Lab	5	30	71%	24	
B209									Sci Lab	0	30	0%	24	not scheduled
B214									CR	6	35	86%	28	
B218									SGI	7	0	100%	0	used as spec. ofc
B219									SGI	7	0	100%	0	resource
B220									CR	0	35	0%	28	current OP only
B221									Cmptr	5	35	71%	28	
B222									Cmptr	5	35	71%	28	
B223									Sci Lab	5	30	71%	24	
C205									Rsrce	4	0	57%	0	read'g; resource
C206									Rsrce	3	0	43%	0	read'g; resource
C207									CR	0	35	0%	28	
C209									SGI	7	0	100%	0	resource
C210									Rsrce	3	0	43%	0	Acad enrich
C211									IU		0	0%	0	
C212									IU		0	0%	0	
C213									IU		0	0%	0	
C214									CR	4	35	57%	28	
C215									CR	3	35	43%	28	
C216									-					no room this num
C217									IU		0	0%	0	
C218									Rsrce	4	0	57%	0	read'g; resource
C219									CR	1	35	14%	28	1p gen; 3p resrce
C220									CR	0	35	0%	28	current OP only
C221									IU		0	0%	0	
C222									-					no room this num
C223									CR	5	35	71%	28	
C224									CR	6	35	86%	28	
C225									Sci Lab	5	30	71%	24	
C226									Sci Lab	5	30	71%	24	
C227									-					no room this num
C228									SGI	7	0	100%	0	
C229									CR	3	35	43%	28	
C230									CR	5	35	71%	28	
C231									CR	5	35	71%	28	
C232									CR	5	35	71%	28	
C233									CR	5	35	71%	28	
C234									CR	5	35	71%	28	
C235									CR	5	35	71%	28	
C237									CR	2	35	29%	28	
C239									Rsrce	4	0	57%	0	Ac encirch
C240									CR	2	35	29%	28	2p math; 2p rsrce
E203									Cmptr	6	35	86%	28	scheduled+signup
E204									Cmptr	3	35	43%	28	signup
E205									IU		0	0%	0	
D103									Cookg	0	35	0%	28	not currently used
D104									-					no room this num
D105									Sewing	4	35	57%	28	
D113									Art	4	20	57%	16	
D114									Art	5	20	71%	16	
D117									Art	4	20	57%	16	
D137									Music	4	20	57%	16	
D138									Music	1	20	14%	16	
D142									Music	4	20	57%	16	

GYM									PE-2	6	70	86%	56		
Fitness									Other	0	0	0%			
Aerobics									PE	0	35	0%	28		
Wrestling														considered PO use	
C101									T Lab	1	20	14%	16	not scheduled	
C105									T Lab	4	20	57%	16	tech	
C110									CAD Lab	0	20	0%	16		
C112									Other	0	0	0%		Computer;signup	
C118									IU	0	0	0%	0		
SubTotal	0	0	0	0	0	0	0	0					1576	0	
Current Capacity	0	0	0	0	0	0	0	0					1576	<i>80% Util with current config</i>	
Actual Enroll													973	<i>Enrolled</i>	
Actual % of Max	<i>(current average building utilization)</i>													61.7%	<i>Avg Utilization Rate</i>

Poquessing Middle School

Historic Students Assigned to Classrooms by Year/Grade

Grade Year	1/2 K	K	1	2	3	4	5	SCSE*	6	7	8	SCSE*	SubTotals		School Total
													General	SCSE	
2010-11													0	0	0
2011-12													0	0	0
2012-13													0	0	0
2013-14													0	0	0
4-Year Average													0	0	0

**Base	
Capacity	Utilization
748	64.3%
748	85.0%
182	

October 2013 Enroll	202	179	185	566
---------------------	-----	-----	-----	------------

Current Capacity

	Clrms	Music	Art	Cmptr	Tech	Sci	PE	ConSci	SE*	SCSE	Other**	IU			
Grades 6-8 (gen stations)	17			2			3	2					24	35	840
Grades 6-8 (Sci/Lab)						4							4	30	120
Grades 6-8 (Bus/Art/Tech)		2	2		3								7	20	140
SCSE (6-8)													0	12	0
Non-Capacity											1	3	4	0	

*SE: pull-out use in full size rooms

Subtotal >> 1100

**Other: full size or LGI rooms or spaces which could provide full size rooms

Utilization Rate (Greater of school average or 90%) >> 80.0%

Capacity supporting spaces are shaded >>



Total >> **880**

Potential Capacity

	Clrms	Music	Art	Cmptr	Tech	Sci	PE	ConSci	SE*	SCSE	Other**	IU			
Grades 6-8 (gen stations)	17			2			3	2					24	35	840
Grades 6-8 (Sci/Lab)						4							4	30	120
Grades 6-8 (Bus/Art/Tech)		2	2		3								7	20	140
SCSE (6-8)													0	12	0
Non-Capacity											1	3	4	0	

*SE: pull-out use in full size rooms

Subtotal >> 1100

**Other: full size or LGI rooms or spaces which could provide full size rooms

Utilization Rate (Greater of school average or 90%) >> 80.0%

Total >> **880**

Description of Changes:

1. none

Max Class Size	1/2 K	K	1	2	3	4	5	SCSE*	6	7	8	SCSE*
Gen/MS Core	44	22	24	25	26	29	29	12	35	35	35	12
MS Sci/Labs									30	30	30	
MS Bus/Art/Tech									20	20	20	
Used in Capacity Calc	44	22			27			12				12

*Only self-contained special education, not pull-out SE programming, is considered capacity supporting

**Base Capacity: calculated based upon current grade/use assignment at the school

***Possible Capacity: calculated with greater of average utilization

2013-14 Poquessing Middle School Room Utilization									*Total periods/day = 7; 6 day cycle; Tchrs 5 of 7 pds						
Utilization Room	1/2 K	K	1	2	3	4	5	SCSE*	Rm Type	Gen Ed Pds	Max Capac	Current Utilization	Capacity (80%) Gen SCSE*	Current Use and Notes	
100									IJ		0		0		
102									Sci Lab	7	30	100%	24		
104									CR	7	35	100%	28		
106									CR	5	35	71%	28		
107									CR	5	35	71%	28		
108									Cookg	0	35	0%	28		
109									Art	1	20	14%	16	3p OP read	
110									ISS		0		0	SGL type room	
111									Art	5	20	71%	16		
112									Sewing	0	35	0%	28	3p OP read	
113									Other	0	0	0%		Computer; signup	
114									CR	5	35	71%	28		
115									SGL	5	0	71%	0		
116									CR	5	35	71%	28		
117									Cmptr	5	35	71%	28	1 OP; 1 sign in pd	
118									-					no room this num	
119									Cmptr	0	35	0%	28	non-sched; signup	
120									-					practice rooms	
121									Music	3	20	43%	16		
122									-					no room this num	
123									Music	7	20	100%	16		
200									CR	5	35	71%	28		
201									CR	5	35	71%	28		
202									CR	5	35	71%	28		
203									Sci Lab	5	30	71%	24		
204									CR	4	35	57%	28		
205									CR	5	35	71%	28		
206									CR	5	35	71%	28		
207									Sci Lab	5	30	71%	24		
208									CR	5	35	71%	28		
209									CR	5	35	71%	28		
210									Sci Lab	5	30	71%	24		
211									CR	5	35	71%	28		
212									CR	5	35	71%	28		
213									Rsrce	7	0	100%	0	Read 180/Sys 44	
214									SGL	3	0	43%	0		
215									CR	4	35	57%	28		
216									SGL	4	0	57%	0		
217									IJ		0		0		
218									SGL	4	0	57%	0		
219									CR	3	35	43%	28		
220									SGL	3	0	43%	0		
221									-					no room this num	
222									SGL	0	0	0%		Tech/IT ofc	
Stage									-					no room this num	
Gm Room									Lesson	0	0	0%	0	music lesson PO	
B1									T Lab	5	20	71%	16	Metals	
B2									T Lab	1	20	14%	16	Wood;used w/mtl	
B3									CAD Lab	6	20	86%	16	CAD/Cmptr lab	
S1									IJ		0		0		
Gym									PE-2	7	70	100%	56	2 stations	
Fitness Cntr									PE	7	35	100%	28		
Pool											0	0%		considered PO use	
LGI-1									LGI	0	0	0%		not used for instr	
LGI-2									LGI	0	0	0%		not used for instr	
SubTotal	0	0	0	0	0	0	0	0					880	0	
Current Capacity	0	0	0	0	0	0	0	0					880	80% Util with current config	
Actual Enroll													566	Enrolled	
Actual % of Max	(current average building utilization)													64.3%	Avg Utilization Rate

2
1

Sandburg Middle School

Historic Students Assigned to Classrooms by Year/Grade

Grade Year	1/2 K	K	1	2	3	4	5	SCSE*	6	7	8	SCSE*	SubTotals		School Total
													General	SCSE	
2010-11													0	0	0
2011-12													0	0	0
2012-13													0	0	0
2013-14													0	0	0
4-Year Average													0	0	0

**Base	
Capacity	Utilization
760	59.0%
760	85.0%
233	

October 2013 Enroll	168	171	188	527
---------------------	-----	-----	-----	------------

Current Capacity

	Clrms	Music	Art	Cmptr	Tech	Sci	PE	ConSci	SE*	SCSE	Other**	IU	SubTotals		School Total
Grades 6-8 (gen stations)	18			2			3	2					25	35	875
Grades 6-8 (Sci/Lab)						3							3	30	90
Grades 6-8 (Bus/Art/Tech)		2	2		3								7	20	140
SCSE (6-8)										1			1	12	12
Non-Capacity											10		10	0	

*SE: pull-out use in full size rooms

Subtotal >> 1117

**Other: full size or LGI rooms or spaces which could provide full size rooms

Utilization Rate (Greater of school average or 90%) >> 80.0%

Capacity supporting spaces are shaded >>



Total >> **894**

Potential Capacity

	Clrms	Music	Art	Cmptr	Tech	Sci	PE	ConSci	SE*	SCSE	Other**	IU	SubTotals		School Total
Grades 6-8 (gen stations)	18			2			3	2			2		27	35	945
Grades 6-8 (Sci/Lab)						3							3	30	90
Grades 6-8 (Bus/Art/Tech)		2	2		3								7	20	140
SCSE (6-8)										1			1	12	12
Non-Capacity											8		8	0	

*SE: pull-out use in full size rooms

Subtotal >> 1187

**Other: full size or LGI rooms or spaces which could provide full size rooms

Utilization Rate (Greater of school average or 80%) >> 80.0%

Total >> **950**

Description of Changes:

1. Combine resource use of regular rooms into fully scheduled rooms; current rooms 1/2 scheduled

Max Class Size	1/2 K	K	1	2	3	4	5	SCSE*	6	7	8	SCSE*
Gen/MS Core	44	22	24	25	26	29	29	12	35	35	35	12
MS Sci/Labs									30	30	30	
MS Bus/Art/Tech									20	20	20	
Used in Capacity Calc	44	22			27			12				12

*Only self-contained special education, not pull-out SE programming, is considered capacity supporting

**Base Capacity: calculated based upon current grade/use assignment at the school

***Possible Capacity: calculated with greater of average utilization

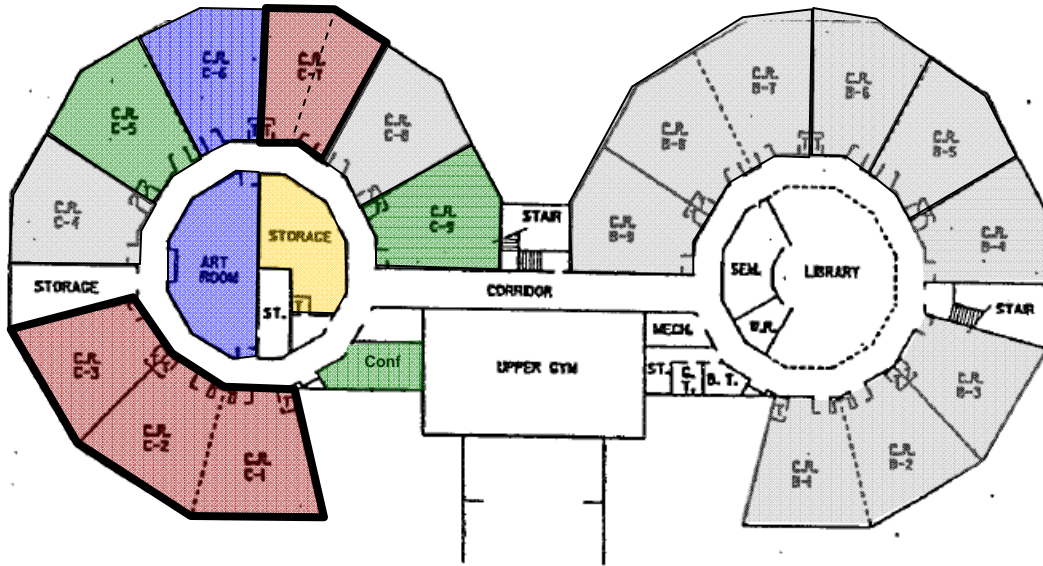
2013-14 Sandburg Middle School Room Utilization		*Total periods/day = 7; 6 day cycle; Tchrs 5 of 7 pds													
Utilization Room	1/2 K	K	1	2	3	4	5	SCSE*	Rm Type	Gen Ed Pds	Max Capac	Current Utilization	Capacity (80%) Gen	SCSE*	Current Use and Notes
A1									Music	2	20	29%	16		Chorus
A2									Music	2	20	29%	16		Band
A3															(2nd half of A1)
A4									LGI	0	0	0%			rear auditorium
A5									LGI	0	0	0%			rear auditorium
A6-Auditorium										0	0	0%			Main Auditorium
B1									Cmptr	0	35	0%	28		sign-up
B2									Cmptr	0	35	0%	28		sign-up
B3									Other	5	0	71%			Computer;signup
B4									Art	5	20	71%	16		
B5									Art	0	20	0%	16		
C1									CR	6	35	86%	28		
C2									Rsrce	2	0	29%	0		OP use, reg cls size
C3									CR	5	35	71%	28		
C4									Sci Lab	5	30	71%	24		
C5									CR	5	35	71%	28		
C6									Rsrce	3	0	43%	0		
C7									Rsrce	6	0	86%	0		1p math;5p AE
C8									CR	6	35	86%	28		
C9									CR	5	35	71%	28		
C10									CR	2	35	29%	28		2p gen use; 3p SE
C11									CR	6	35	86%	28		
C12									Rsrce	2	0	29%	0		OP use, reg cls size
D1									T Lab	5	20	71%	16		
D2									T Lab	0	20	0%	16		not scheduled
D3									CAD Lab	0	20	0%	16		not scheduled
D4									Sewing	0	35	0%	28		PO frm LifeSkills
D5									Cookg	0	35	0%	28		PO frm LifeSkills
E1									SGL	6	0	86%	0		
E2									Rsrce	2	0	29%			OP math use
E3									SGL	6	0	86%	0		
E4									CR	5	35	71%	28		
E5									CR	0	35	0%	28		
E6									Sci Lab	5	30	71%	24		
E7									CR	6	35	86%	28		
E8									Rsrce	4	0	57%	0		Reading use
E9									CR	5	35	71%	28		
E10									CR	5	35	71%	28		
E11									CR	5	35	71%	28		
E12									CR	5	35	71%	28		Science
E13									IPC	0	0	0%	0		IPC
F1									Rsrce	2	0	29%	0		OP use, reg cls size
F2									Sci Lab	5	30	71%	24		Science
F3									CR	5	35	71%	28		
F4									SpEd	4	12	57%	10		Life skills
F5									CR	3	35	43%	28		3p gen; 3p lifeskills
F6									CR	5	35	71%	28		
F7									CR	5	35	71%	28		
F8									Rsrce	5	0	71%	0		PO Rdg, resource
Gym									PE-2	6	70	86%	56		2 stations
Pool											0	0%			considered PO use
Fitness Room									PE	6	35	86%	28		1 station
TV Lab															
SubTotal	0	0	0	0	0	0	0	0					884	10	
Current Capacity	0	0	0	0	0	0	0	0					894		80% Util with current config
Actual Enroll													527		Enrolled
Actual % of Max													59.0%		Avg Utilization Rate

Appendix 3: Current Building Plans

The calculation basis for current building capacities for each elementary and middle school includes consideration of how the buildings are currently used and the programs they support. Plans showing current use in each school can be found on the pages that follow in this appendix.

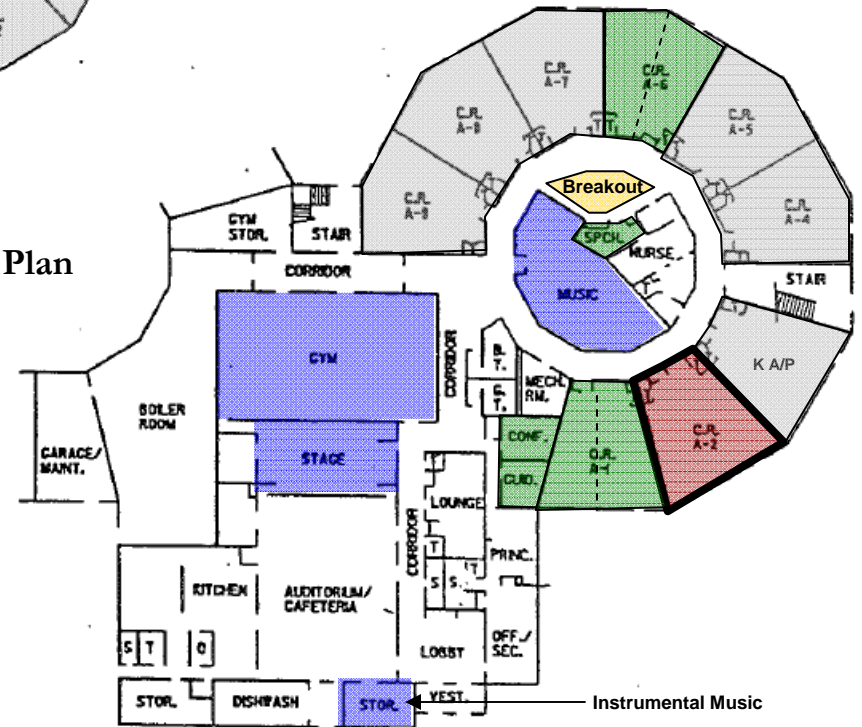
Buck Elementary School

Floor Plan



Second Floor Plan

First Floor Plan



- Legend/Notes:
- General Instruction (capacity)
 - Special Instruction/use (non-capacity; full-size room)
 - Self-contained SE; IU use (bold outline)
 - Small Group/Specialized/Resource Special Ed
 - Other

Everitt Elementary School

Floor Plan



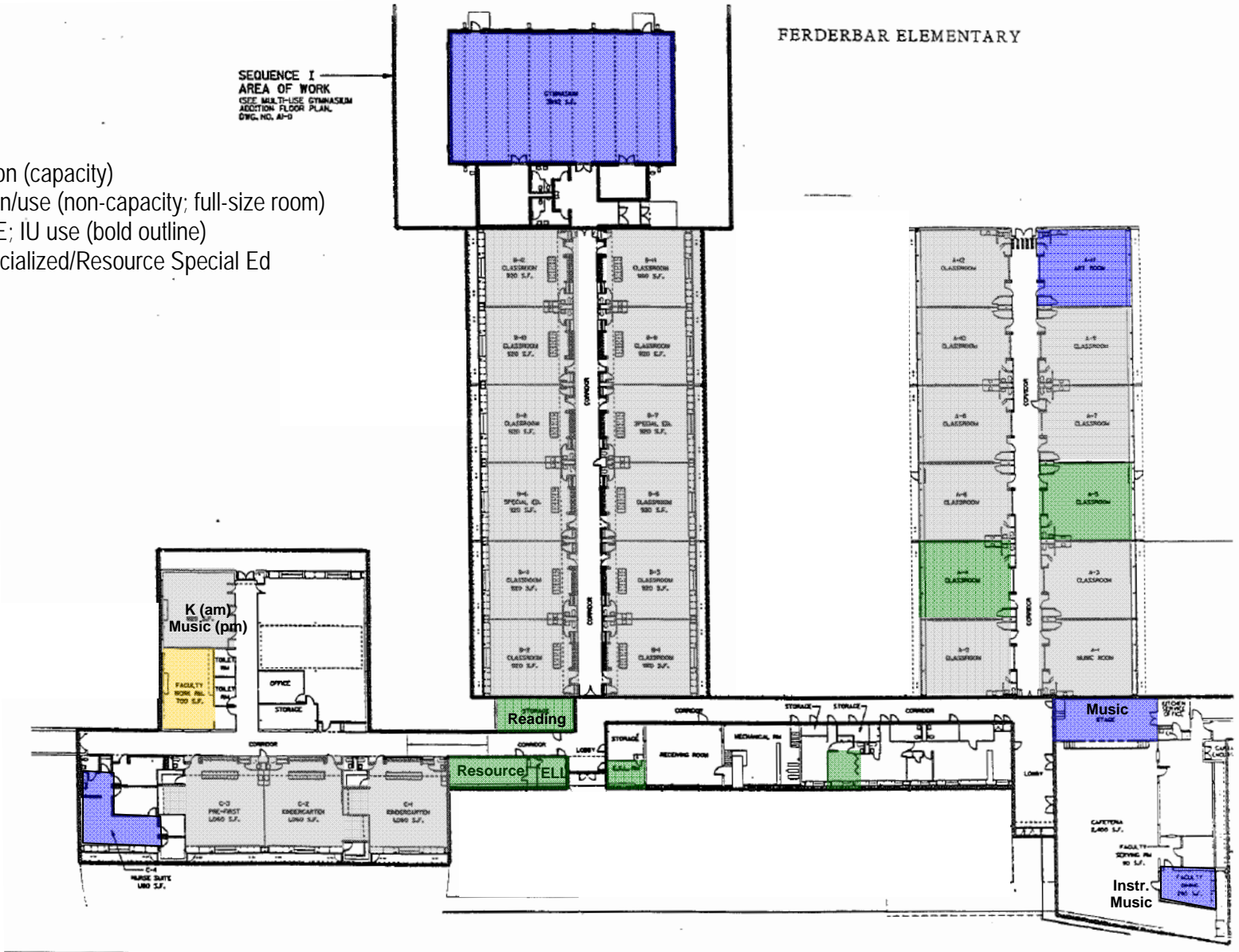
Legend/Notes:

- General Instruction (capacity)
- Special Instruction/use (non-capacity; full-size room)
- Self-contained SE; IU use (bold outline)
- Small Group/Specialized/Resource Special Ed
- Other

Ferderbar Elementary School

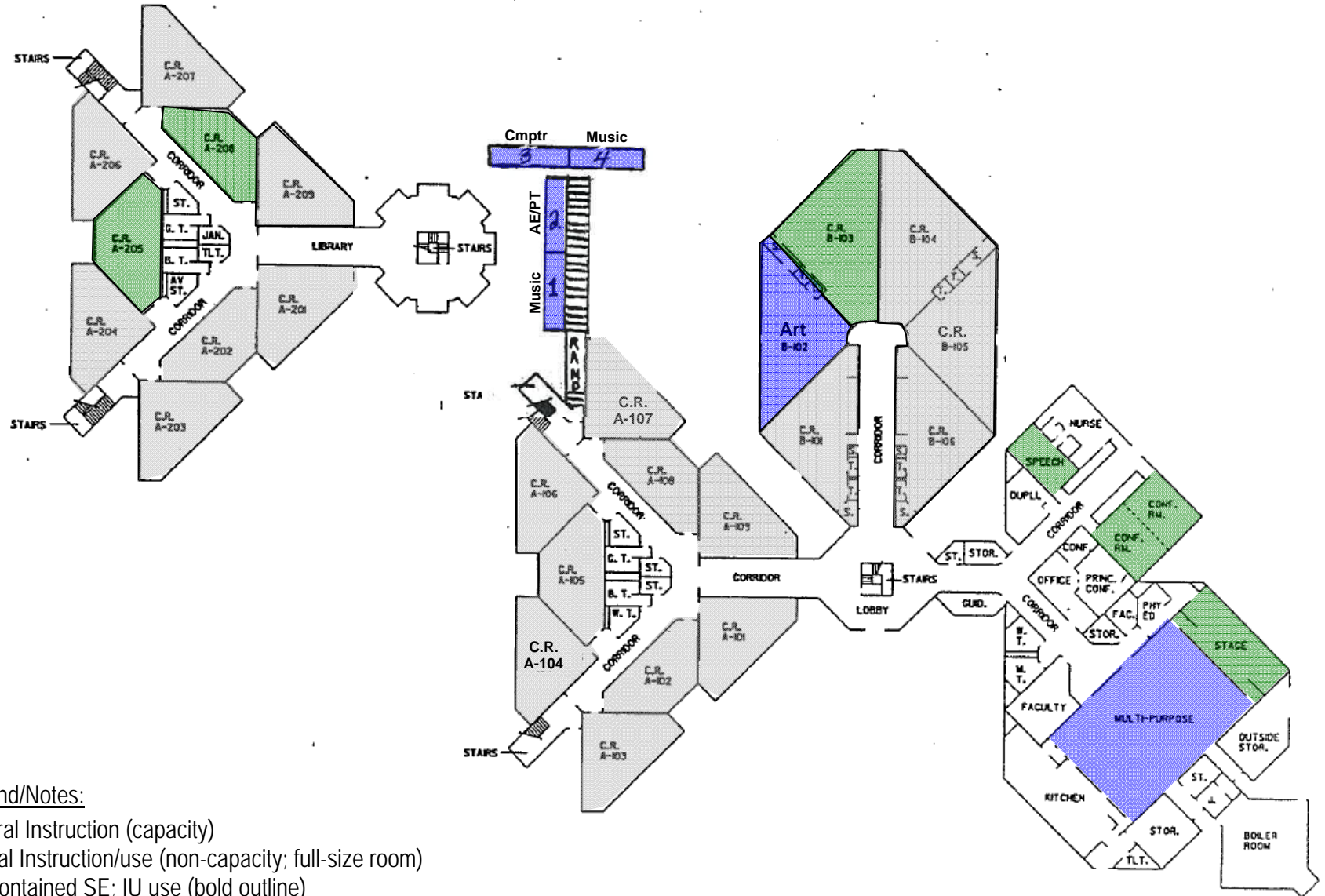
Floor Plan

- Legend/Notes:
- General Instruction (capacity)
 - Special Instruction/use (non-capacity; full-size room)
 - Self-contained SE; IU use (bold outline)
 - Small Group/Specialized/Resource Special Ed
 - Other



Heckman Elementary School

Floor Plan



Legend/Notes:

- General Instruction (capacity)
- Special Instruction/use (non-capacity; full-size room)
- Self-contained SE; IU use (bold outline)
- Small Group/Specialized/Resource Special Ed
- Other

Hoover Elementary School

Floor Plan

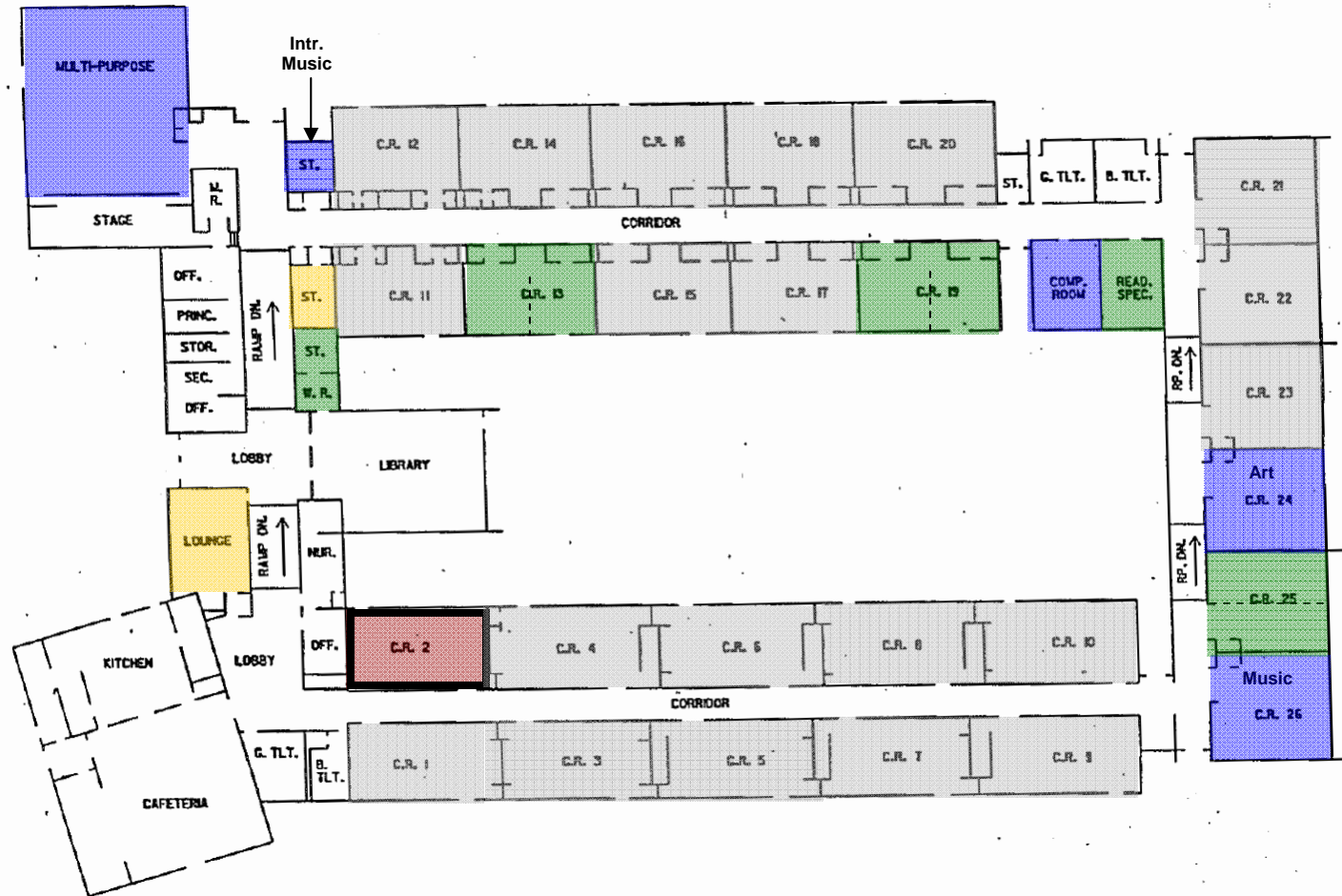


Legend/Notes:

- General Instruction (capacity)
- Special Instruction/use (non-capacity; full-size room)
- Self-contained SE; IU use (bold outline)
- Small Group/Specialized/Resource Special Ed
- Other

Lower Southampton Elementary School

Floor Plan




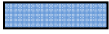
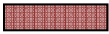
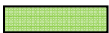

Legend/Notes:

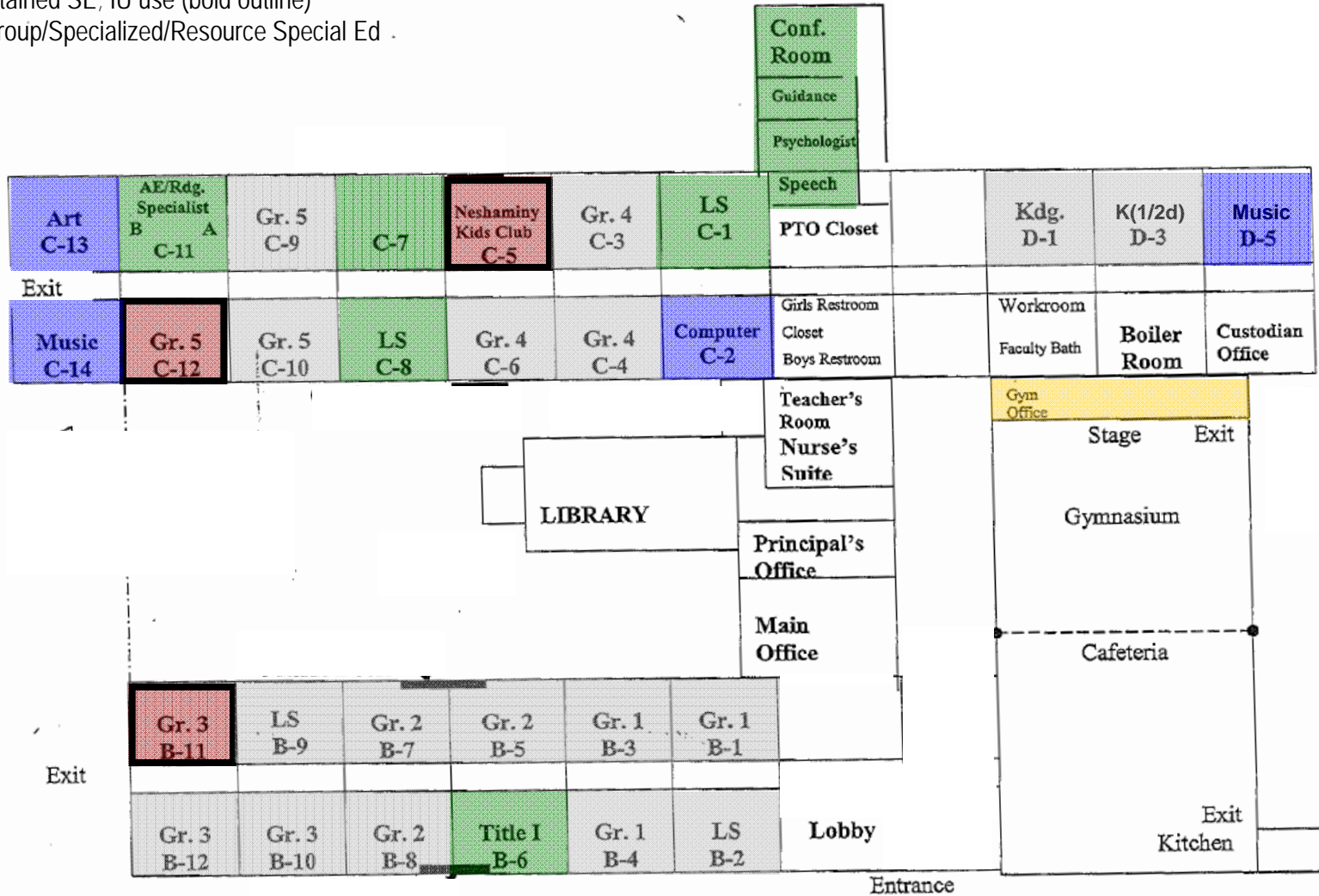
- General Instruction (capacity)
- Special Instruction/use (non-capacity; full-size room)
- Self-contained SE; IU use (bold outline)
- Small Group/Specialized/Resource Special Ed
- Other

Miller Elementary School

Floor Plan

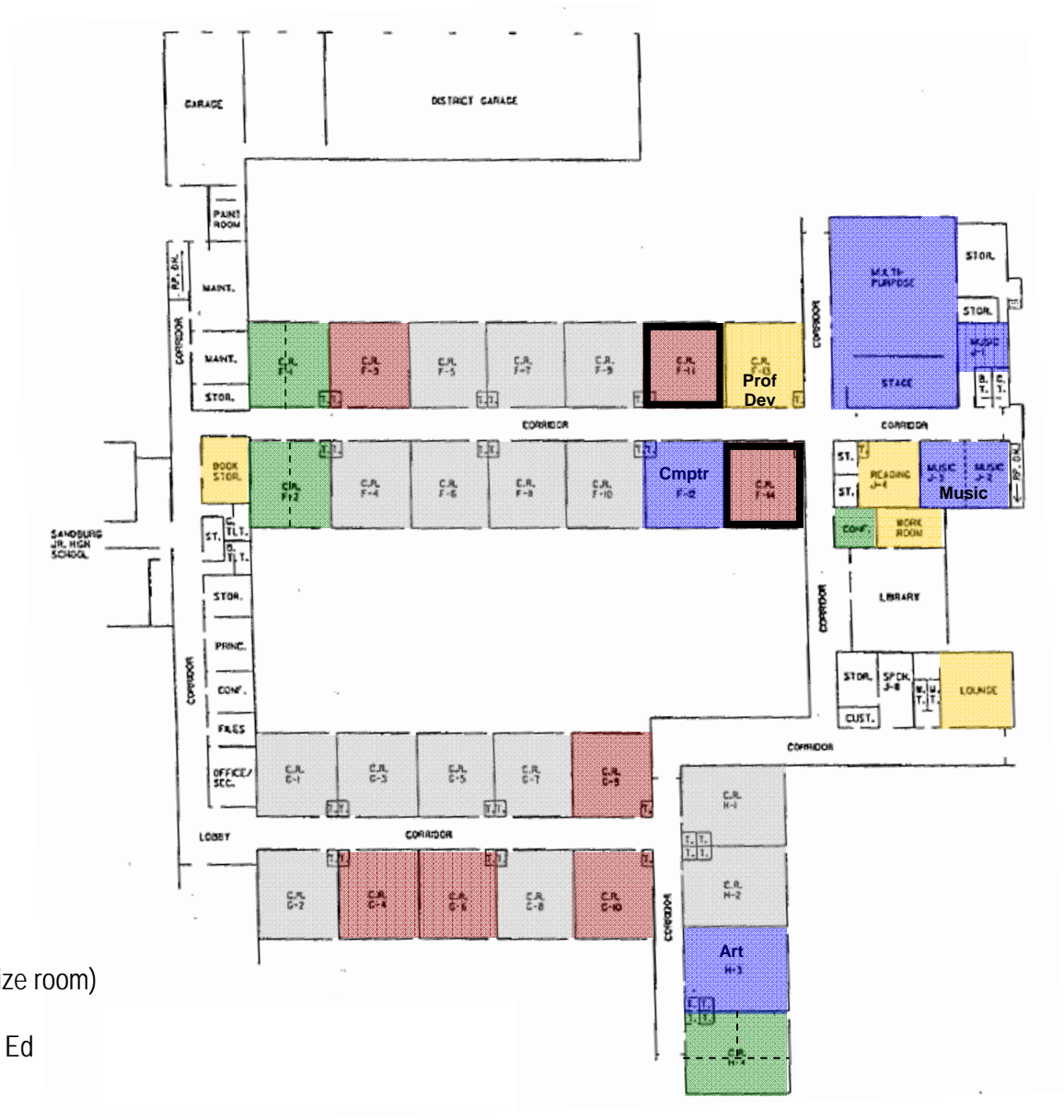
Legend/Notes:

-  General Instruction (capacity)
-  Special Instruction/use (non-capacity; full-size room)
-  Self-contained SE; IU use (bold outline)
-  Small Group/Specialized/Resource Special Ed
-  Other



Schweitzer Elementary School

Floor Plan

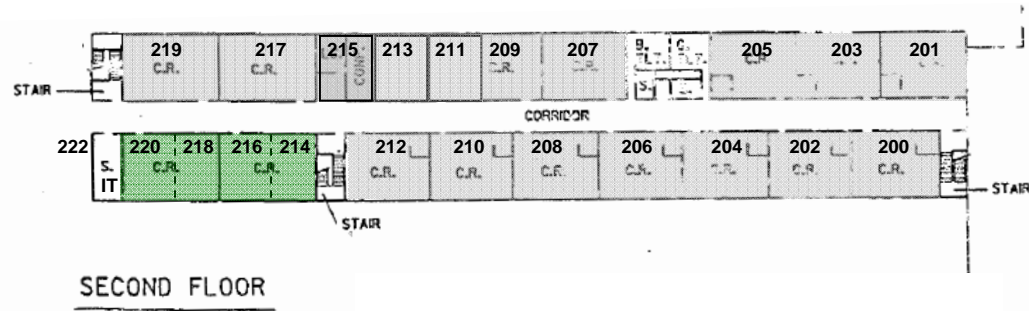


Legend/Notes:


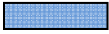
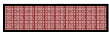


- General Instruction (capacity)
- Special Instruction/use (non-capacity; full-size room)
- Self-contained SE; IU use (bold outline)
- Small Group/Specialized/Resource Special Ed
- Other

Poquessing Middle School

Floor Plan



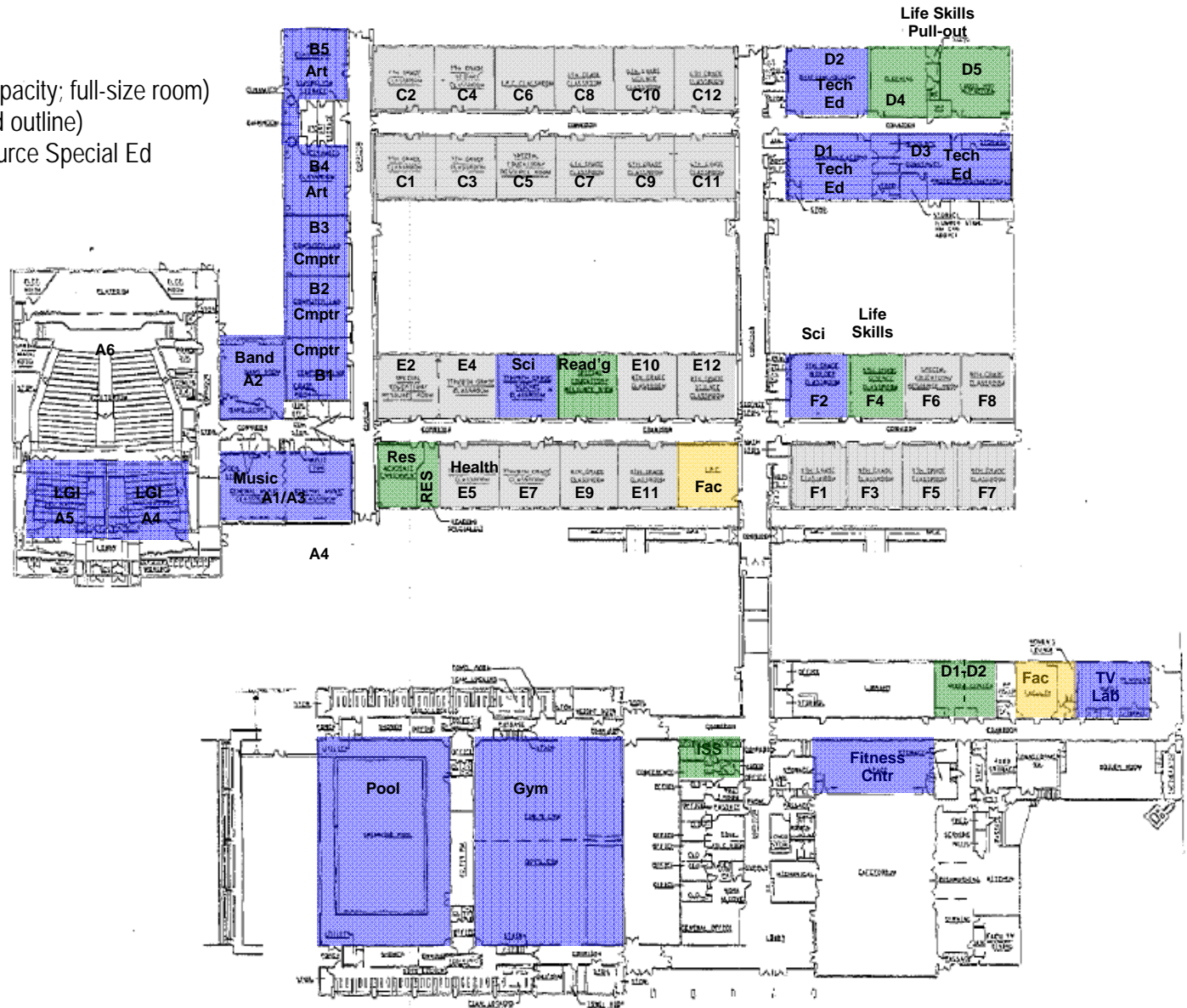
Legend/Notes:

-  General Instruction (capacity)
-  Special Instruction/use (non-capacity; full-size room)
-  Self-contained SE; IU use (bold outline)
-  Small Group/Specialized/Resource Special Ed
-  Other

Carl Sandburg Middle School

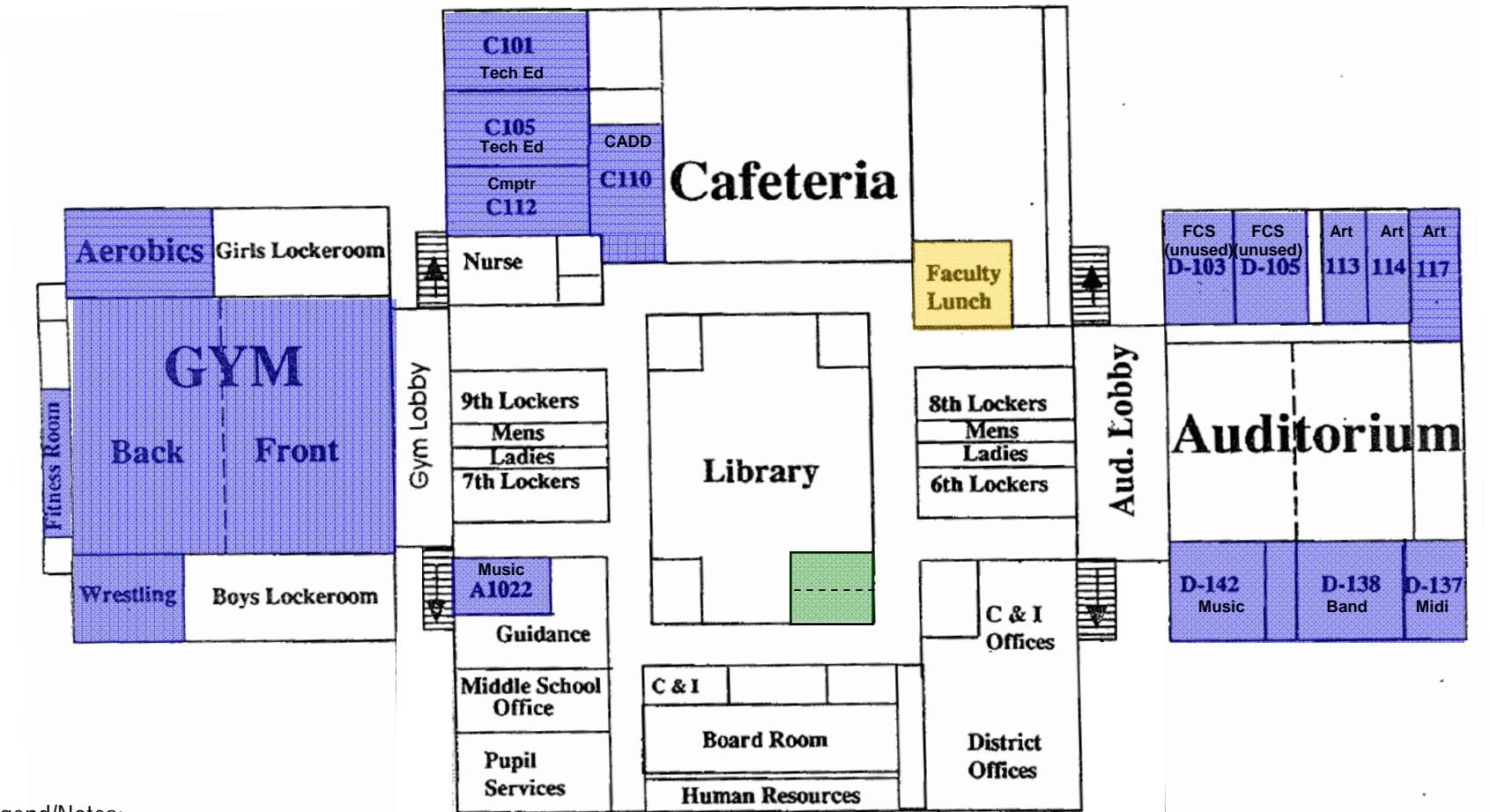
Floor Plan

- Legend/Notes:
- General Instruction (capacity)
 - Special Instruction/use (non-capacity; full-size room)
 - Self-contained SE; IU use (bold outline)
 - Small Group/Specialized/Resource Special Ed
 - Other



Maple Point Middle School

First Floor Plan

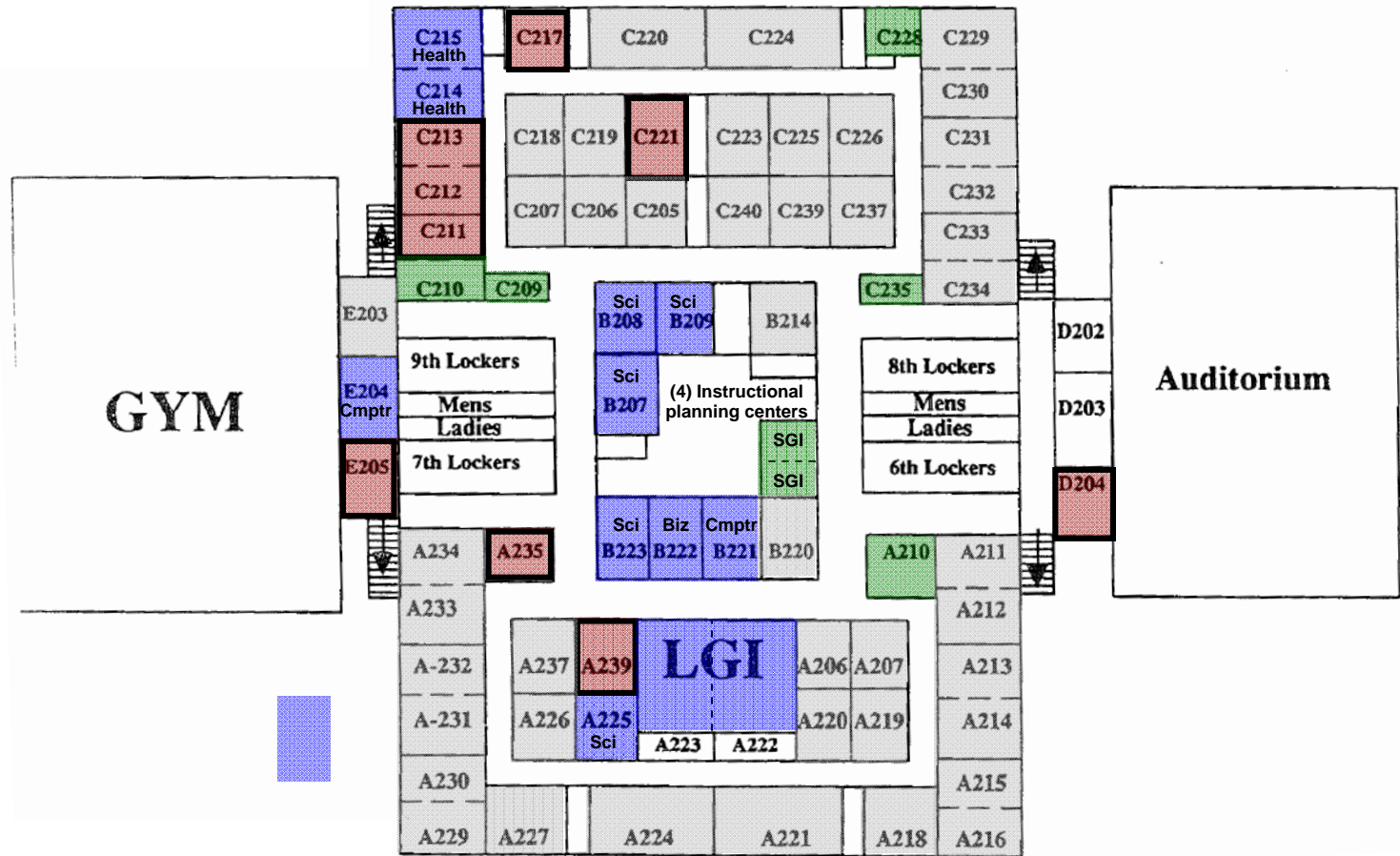


Legend/Notes:

- General Instruction (capacity)
- Special Instruction/use (non-capacity; full-size room)
- Self-contained SE; IU use (bold outline)
- Small Group/Specialized/Resource Special Ed
- Other

Maple Point Middle School

Second Floor Plan

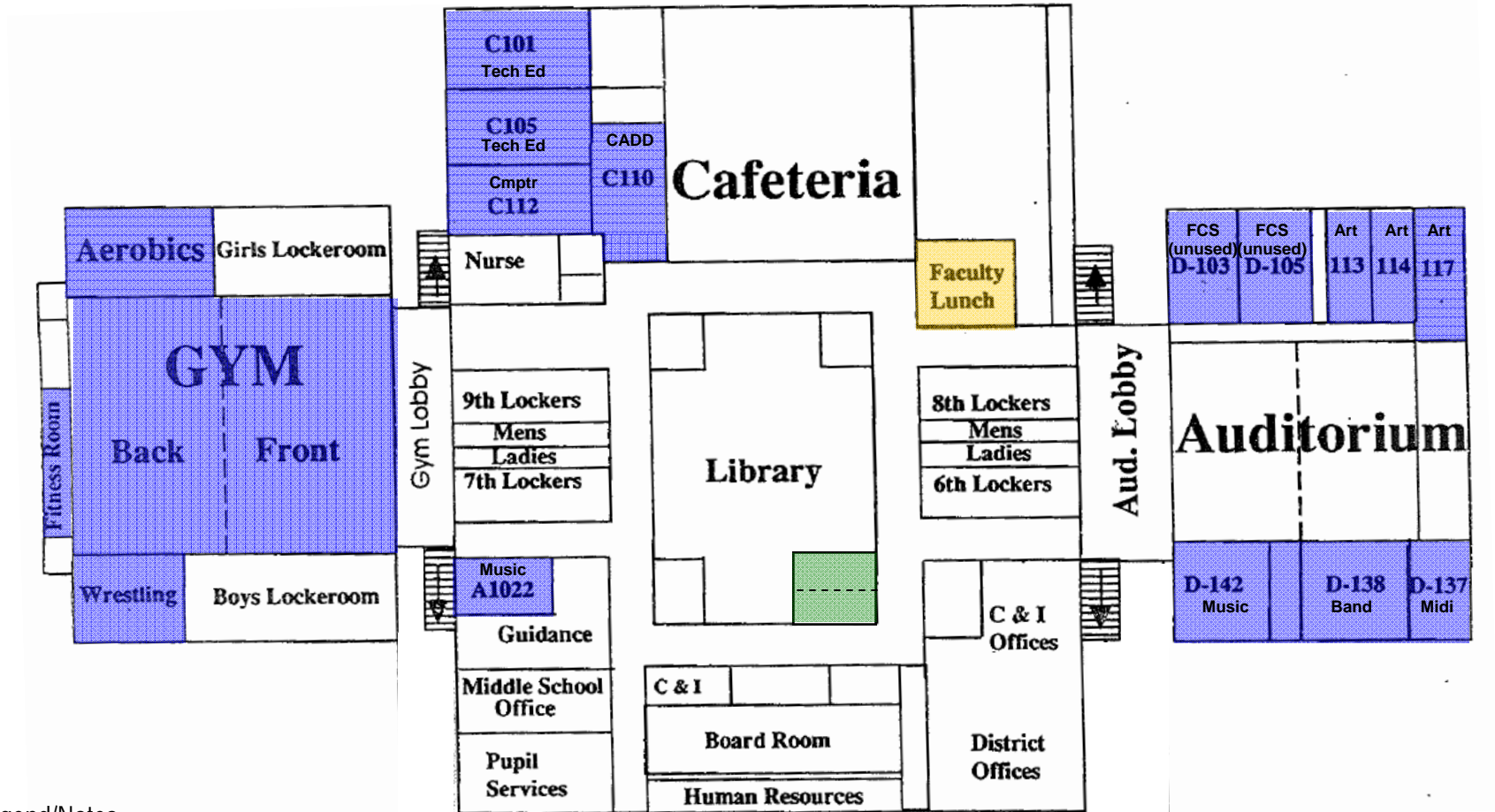


Legend/Notes:

- General Instruction (capacity)
- Special Instruction/use (non-capacity; full-size room)
- Self-contained SE; IU use (bold outline)
- Small Group/Specialized/Resource Special Ed
- Other

Maple Point Middle School

First Floor Plan

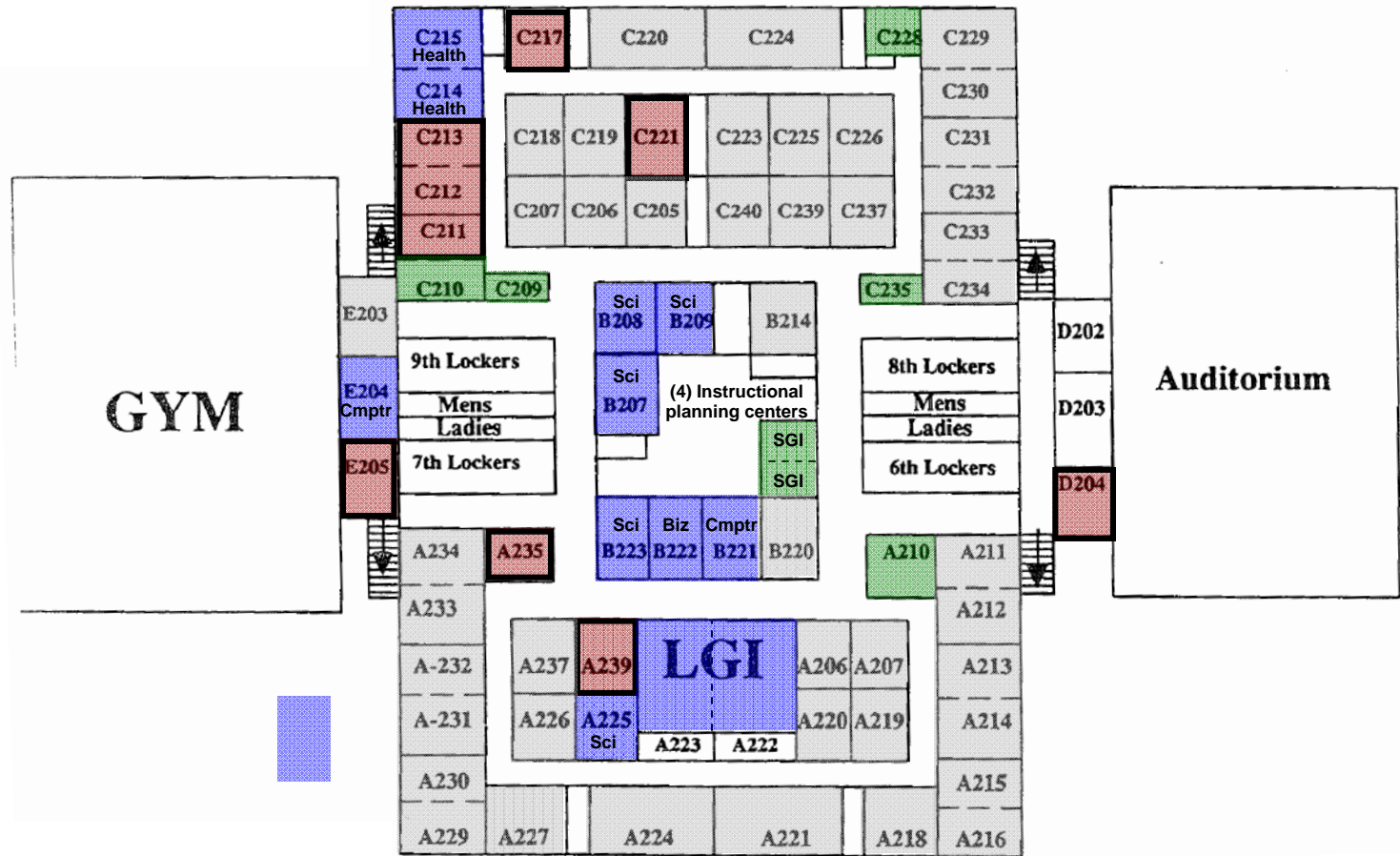


Legend/Notes:

- General Instruction (capacity)
- Special Instruction/use (non-capacity; full-size room)
- Self-contained SE; IU use (bold outline)
- Small Group/Specialized/Resource Special Ed
- Other

Maple Point Middle School

Second Floor Plan



Legend/Notes:

- General Instruction (capacity)
- Special Instruction/use (non-capacity; full-size room)
- Self-contained SE; IU use (bold outline)
- Small Group/Specialized/Resource Special Ed
- Other